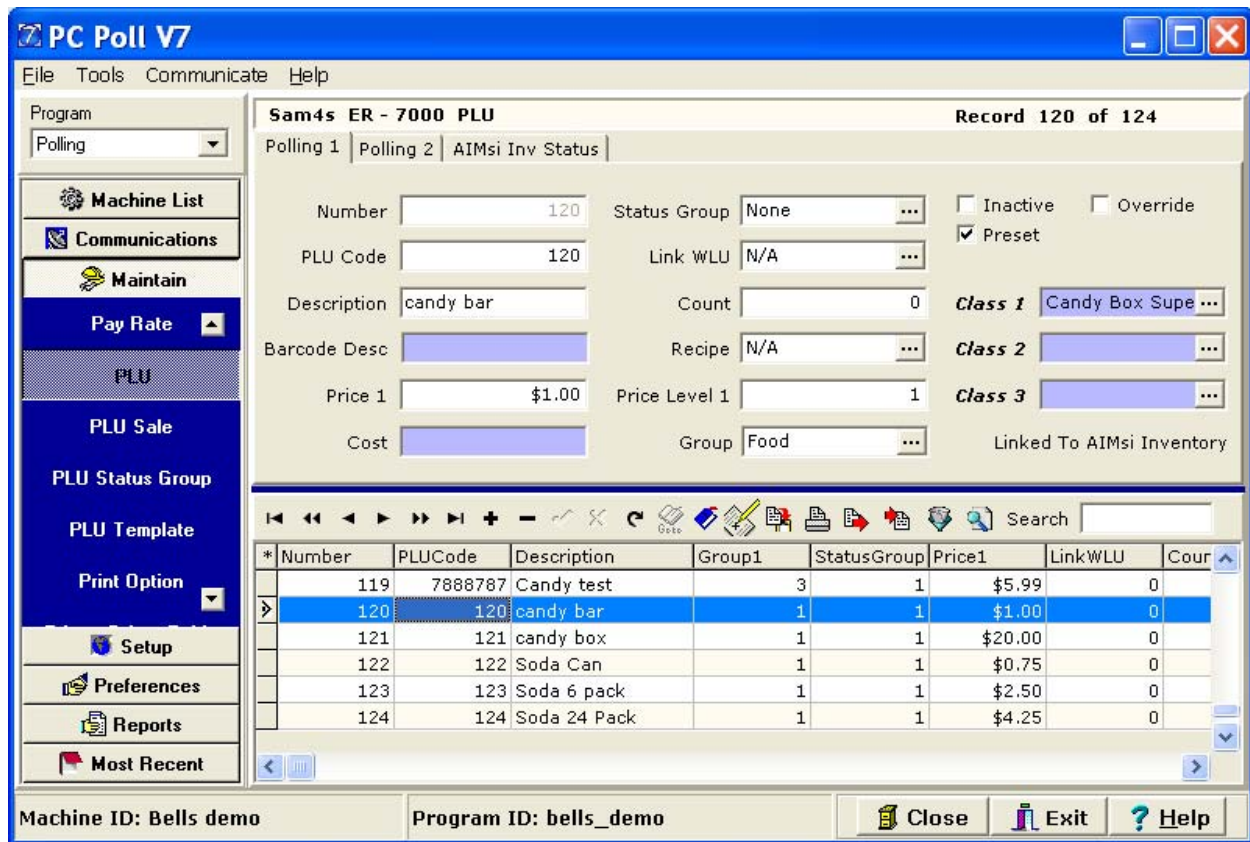


## Notes on Single/6-Pack/Case items or candy bar/candy box items (AIMsi Breakdown SKUs)

Below are a few examples on how to setup V7 Polling and AIMsi Inventory to work with breakdown SKUs. In the examples we have created unique item codes for each item/PLU/SKU. At the register this can be done multiple ways, please consult your dealer manual. *For example, one could use modifier keys to allow the users to scan in the same item codes and then simply change 1 digit of the item code.*

### Example 1: Candy bar and Candy Box

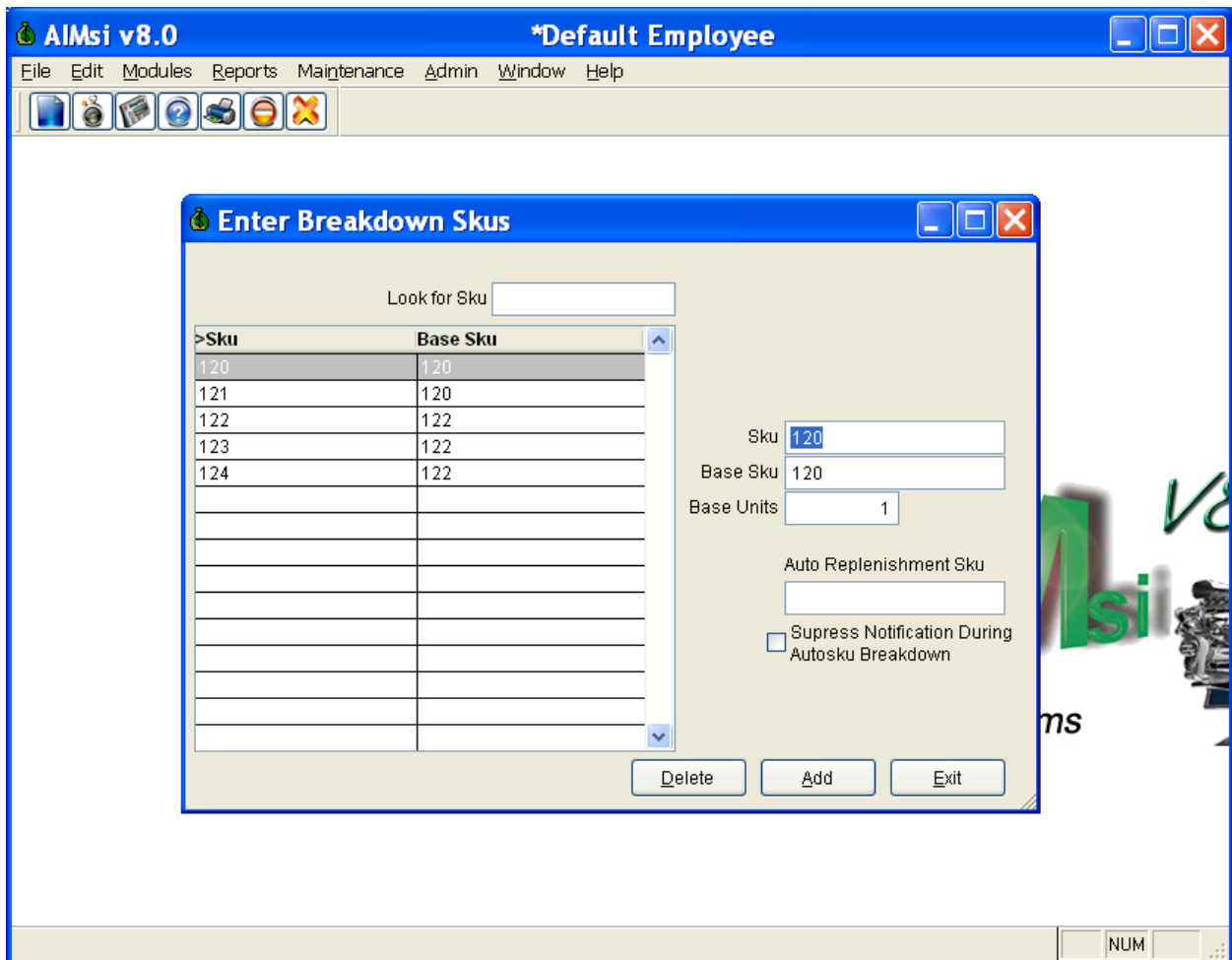
- Here we created two items in polling and sent them to inventory. To help separate reporting on the AIMsi side, we also linked the items to a V7 PLU Class (AIMsi selection code). In this example we created Candy Box Super Class and linked both item 120 and 121 to that Class. Item 120 is the single bar & 121 is the box.



- Within the AIMsi software one needs to link the items together. Maintenance | Inventory Maintenance | Maintain Breakdown SKUs.
- Each item must be added to this table. The base SKU in this example is the single candy bar. See images below. Auto Replenishment SKU and Suppress Notification During Autosku Breakdown are not used for the inventory to polling link. They are used for direct AIMsi sales. *Note: In updates after 1/1/2011 of AIMsi & V7 polling the Auto Replenishment option is available.*

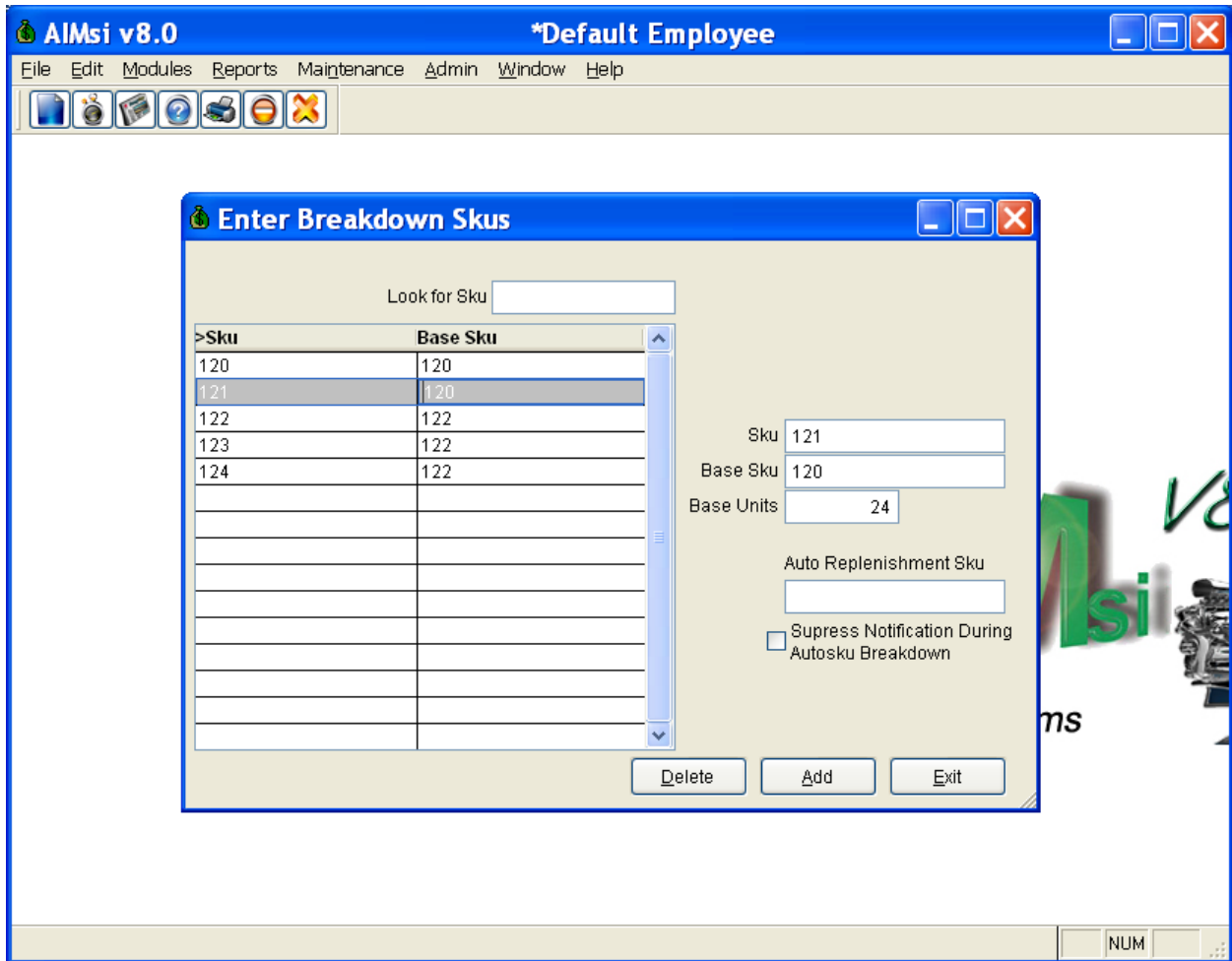
Single bar example:

The SKU is 120 for the single candy bar & 120 is also the base item SKU number. There is only 1 unit in the base item. *Note: When using updates after 1/1/2011 users can select an Auto Replenishment SKU, in this case it would be item number 121.*

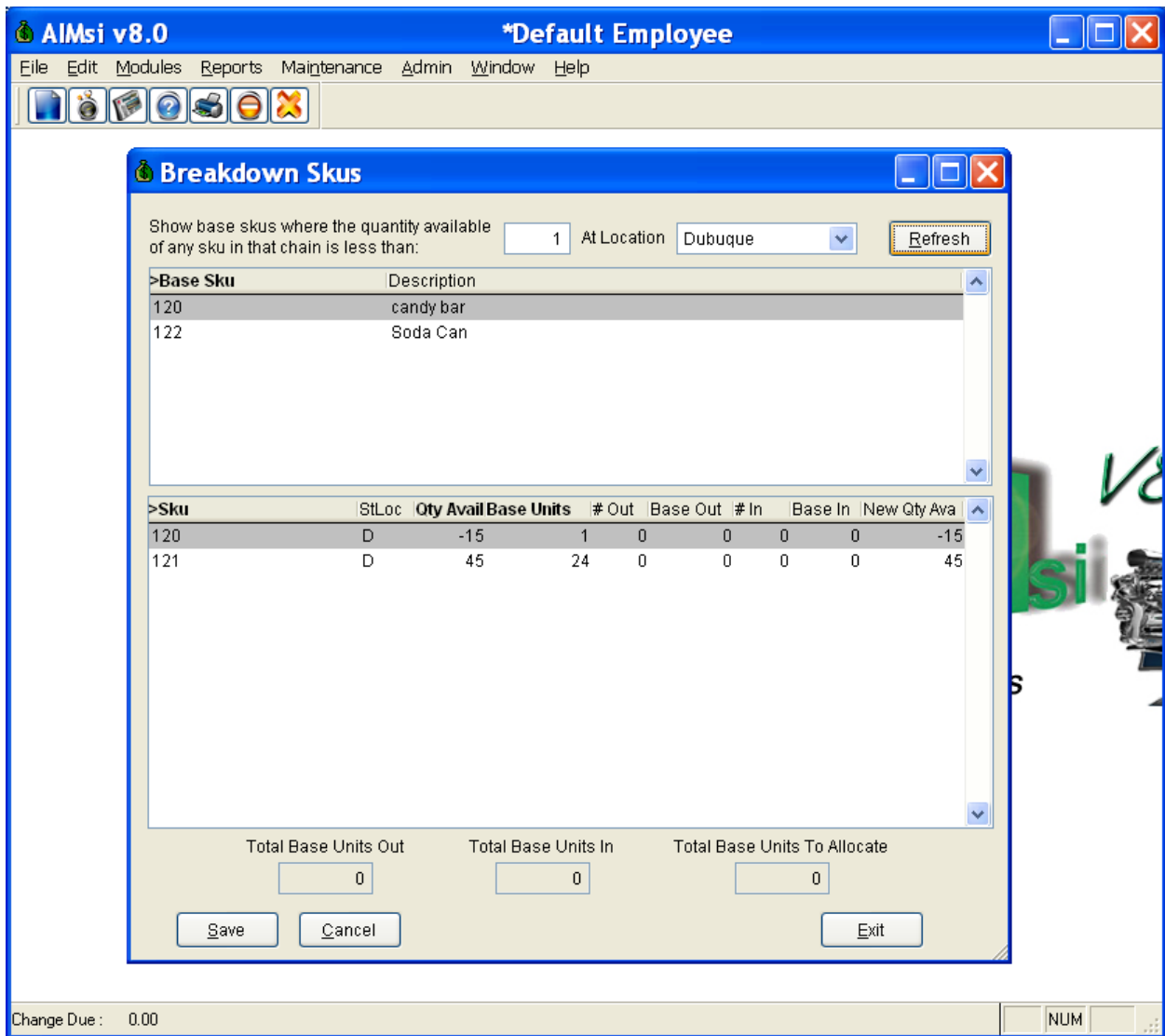


Candy box example:

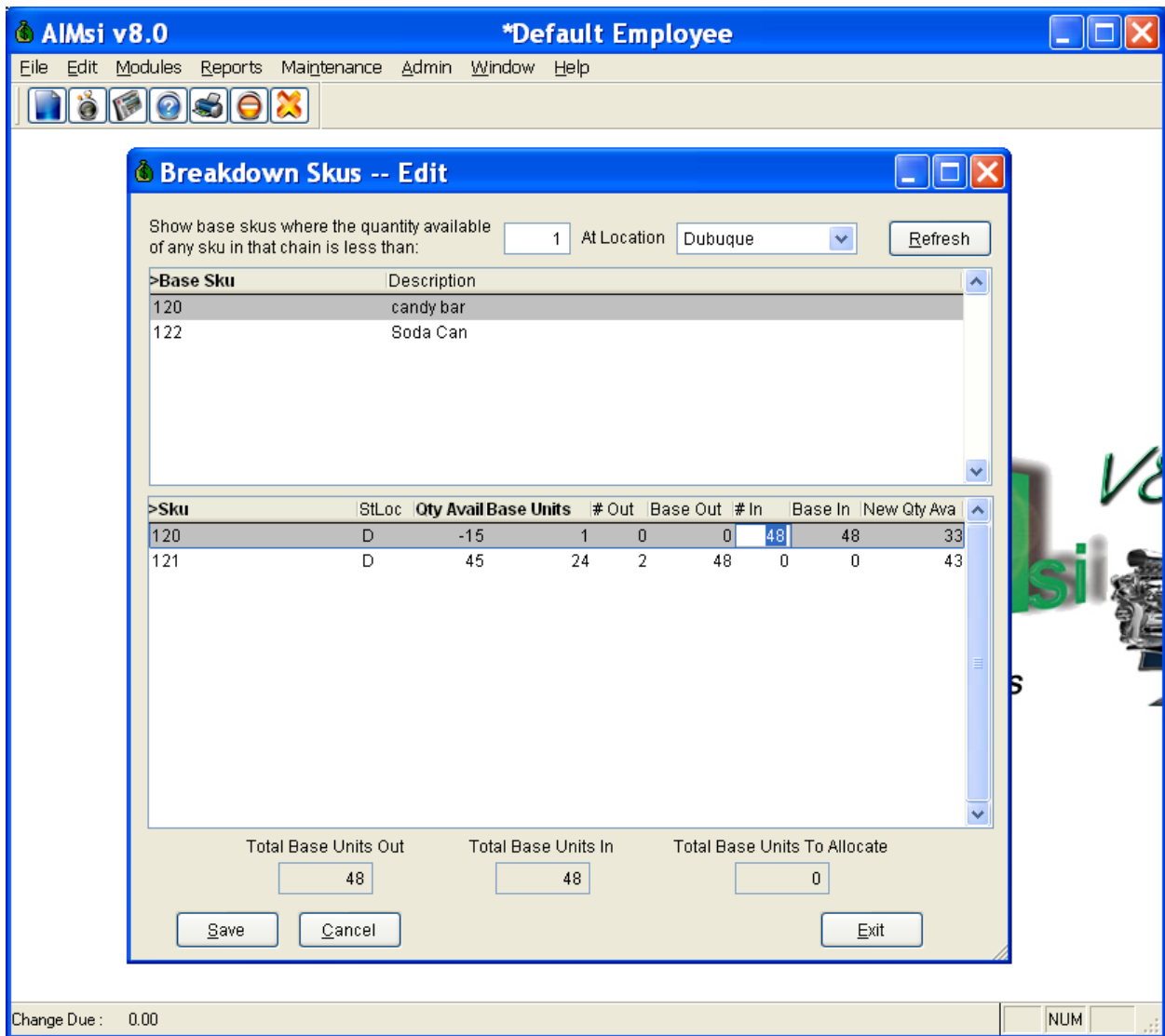
The SKU is 121 for the box of candy bars & 120 is the base item, the single bar. There are 24 bars in the box.



- Now the two items are linked. When the Candy Bar item (#120) gets down to zero or below zero the user will need to transfer items from the Candy Box (#121) to Candy Bars. To do that, go to Modules | Inventory | Utilities | Breakdown SKUs. *Note: In the newer updates with the Auto Replenishment SKU option setup, as sales are imported into AIMsi from polling and the SKU on-hand count goes below zero, the software will automatically transfer SKUs over as needed and based on availability. The Manual option can always also be run as desired.*
- Click the Refresh button, on the Breakdown SKUs screen, to load in the linked items.
- In this example, candy bar has been selected. The current on-hand count of candy bar is -15. There are 45 boxes of candy bars available.

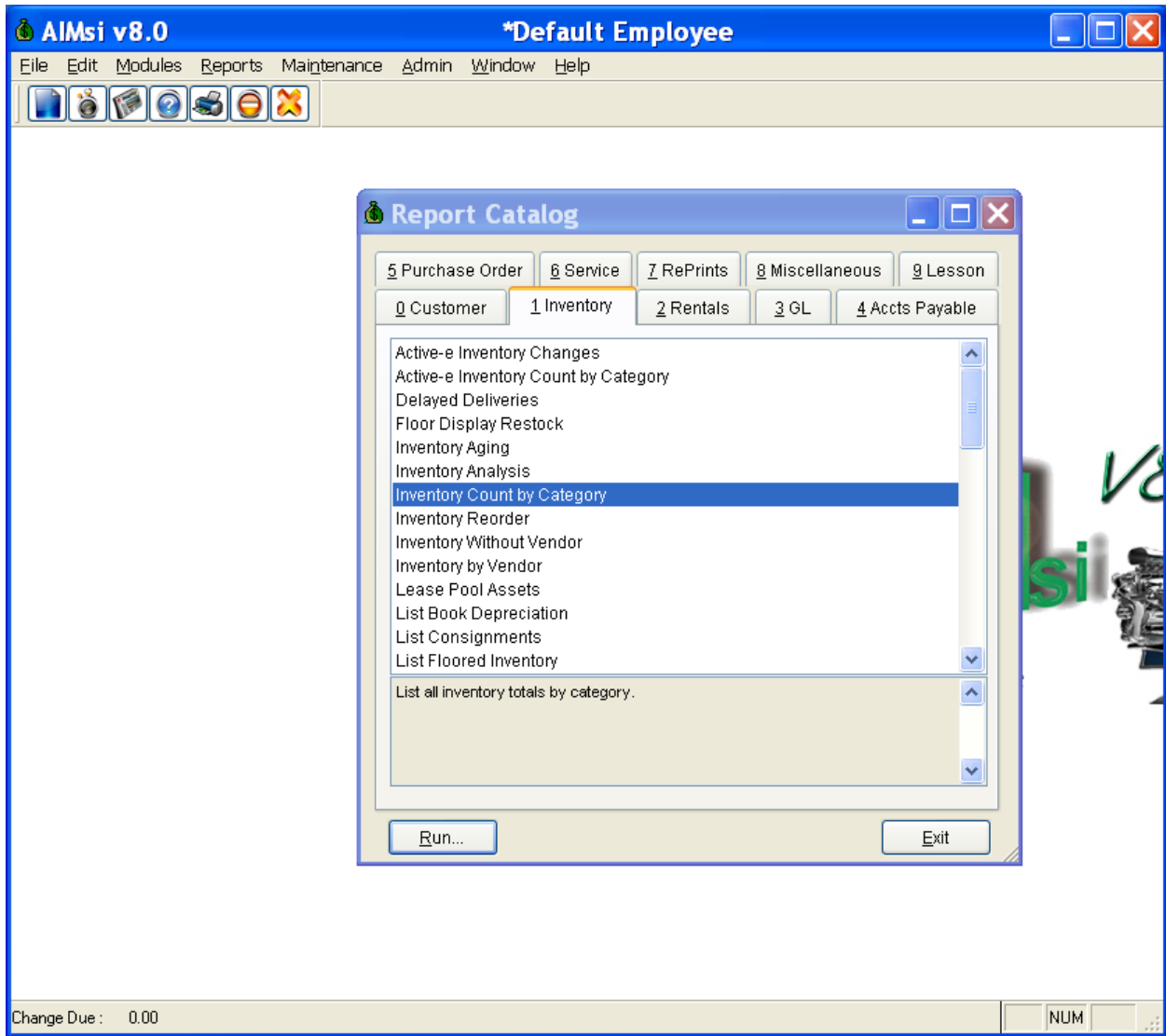


- To manually transfer boxes to bars simply type in the number to transfer in #Out column for boxes (#121) and then enter the #In number for bars. Note: The total base units must offset each other. For example, 1 box equals 24 bars. In this example, we transferred 2 boxes or 48 bars. We entered 2 for the #Out (two boxes) and 48 for the #In (48 single units).

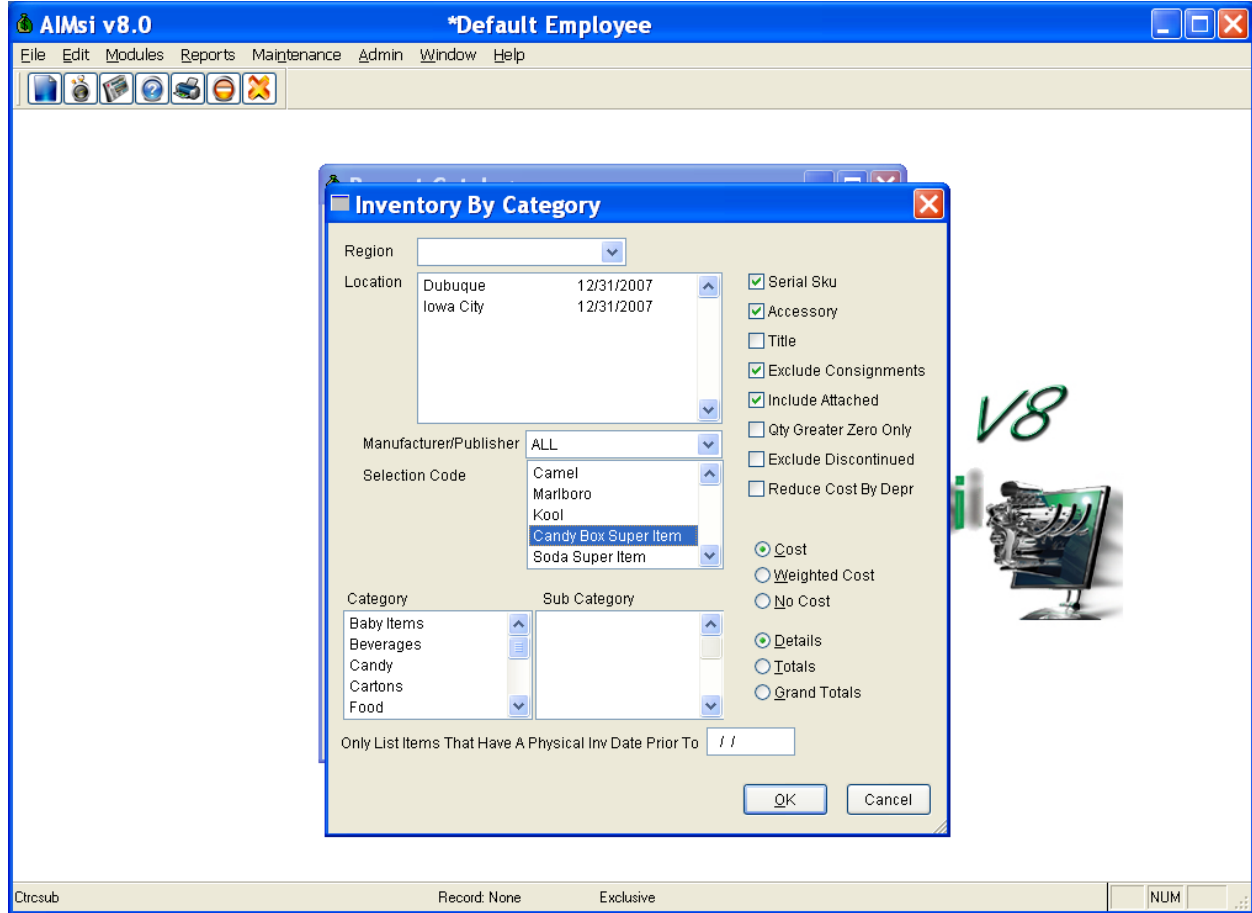


8. Once completed click Save. Once the items no longer have a Qty Avail Base Units of zero or a negative number, they will disappear from the breakdown SKUs edit area.
9. For reporting, go to Reports | Catalog | Inventory | Inventory Count by Category. Since we setup the candy items to be linked to a Class/Selection Code, we can break down the reporting to show only those items. In this example, we have 33 candy bars on hand and 43 boxes.

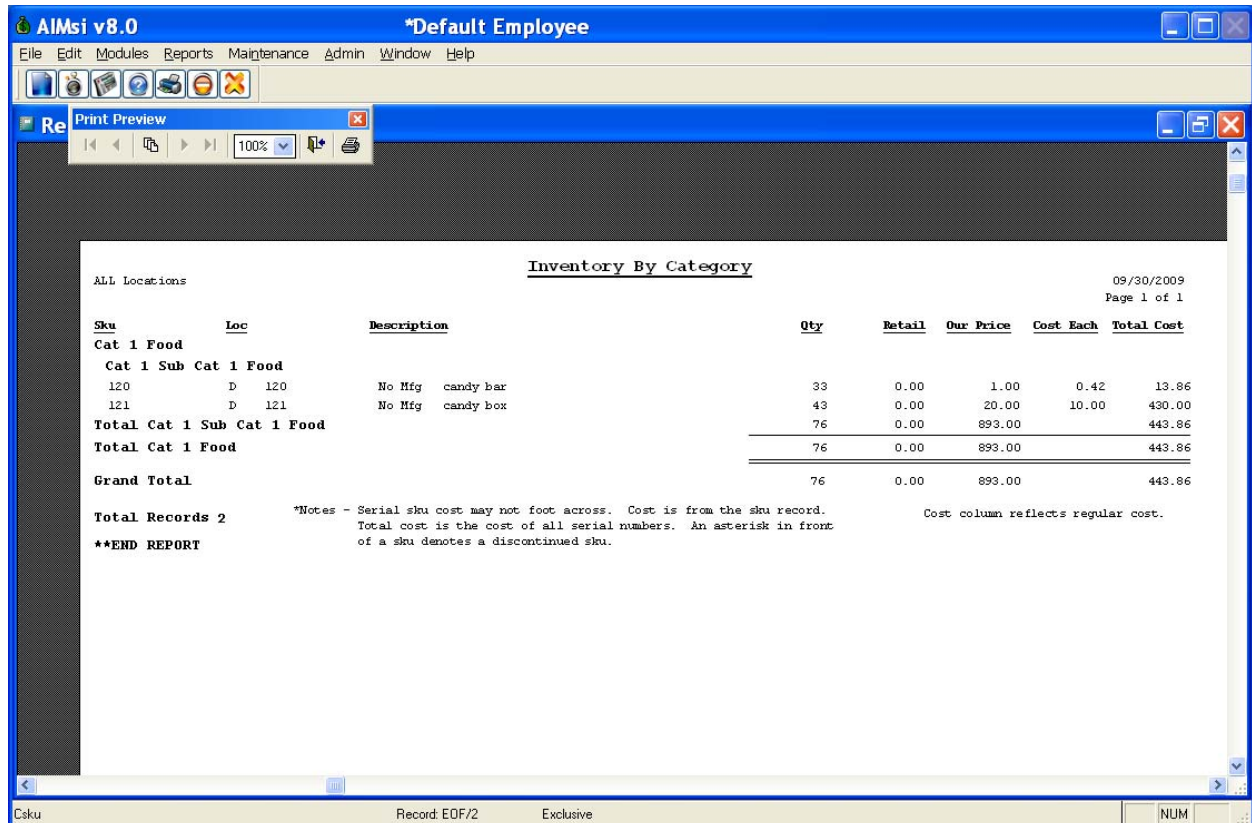
(Reports Menu for Inventory Count by Category report)



(Filtering the report data down to just the Candy Box Super Item selection code. Users may select 1 or multiple codes for filtering.)



(Sample inventory report with 33 candy bars on hand and 43 candy boxes.)



(Here is an example sales report filtered on just the candy bar/box items. 25 bars have been sold and 15 boxes have been sold.)

AIMsi v8.0 \*Default Employee

File Edit Modules Reports Maintenance Admin Window Help

Print Preview

09/30/2009 - 09/30/2009  
All Locations

Top Selling Inventory

09/30/2009  
Pg# 1

Sku	Desc	Qty	Cost	Sold	Margin	%
121	candy box	25	250.00	500.00	250.00	50.00
120	candy bar	15	6.30	15.00	8.70	58.00
<b>Grand Total</b>		<b>40</b>	<b>256.30</b>	<b>515.00</b>	<b>258.70</b>	<b>50.23</b>

Total Records 2  
\*\*END REPORT

Cinvtop Record: EOF/2 Exclusive NUM



10. **Example 2:** Below are screen examples on the setup for a single can, 6 pack and 24 pack.

(Create the items and link them to a Soda Super Item Class if desired.)

The screenshot shows the 'PC Poll V7' software interface. The main window title is 'Sam4s ER - 7000 PLU' and it displays 'Record 123 of 124'. The interface is divided into several sections:

- Left Sidebar:** Contains navigation buttons for 'Machine List', 'Communications', 'Maintain', 'Pay Rate', 'PLU', 'PLU Sale', 'PLU Status Group', 'PLU Template', 'Print Option', 'Setup', 'Preferences', 'Reports', and 'Most Recent'.
- Top Menu:** 'File Tools Communicate Help'.
- Form Fields:**
  - Number: 123
  - PLU Code: 123
  - Description: Soda 6 pack
  - Barcode Desc: (empty)
  - Price 1: \$2.50
  - Cost: (empty)
  - Status Group: None
  - Link WLU: N/A
  - Count: 0
  - Recipe: N/A
  - Price Level 1: 1
  - Group: Food
  - Class 1: Soda Super Item
  - Class 2: (empty)
  - Class 3: (empty)
  - Options:  Inactive,  Override,  Preset
  - Linked To AIMsi Inventory: (checked)
- Table:** A table listing items with columns: Number, PLUCode, Description, Group1, StatusGroup, Price1, LinkWLU, and Cour. The row for 'Soda 6 pack' (Number 123, PLUCode 123) is highlighted in blue.
- Bottom Bar:** Shows 'Machine ID: Bells demo' and 'Program ID: bells\_demo', along with 'Close', 'Exit', and 'Help' buttons.

(Create the Breakdown Sku table. This is the Soda Can setup.)

AIMsi v8.0 \*Default Employee

File Edit Modules Reports Maintenance Admin Window Help

Look for Sku

Skus	Base Sku
120	120
121	120
122	122
123	122
124	122

Skus: 122  
Base Sku: 122  
Base Units: 1

Auto Replenishment Sku

Supress Notification During Autosku Breakdown

Delete Add Exit

Reportcatalog (SciReportcatalog) Record: 1/237 Record Unlocked NUM

(This is the 6 pack setup. The 6 pack has a base SKU of a can)

AIMsi v8.0 \*Default Employee

File Edit Modules Reports Maintenance Admin Window Help

Look for Sku

Skus	Base Sku
120	120
121	120
122	122
123	122
124	122

Skus: 123  
Base Sku: 122  
Base Units: 6

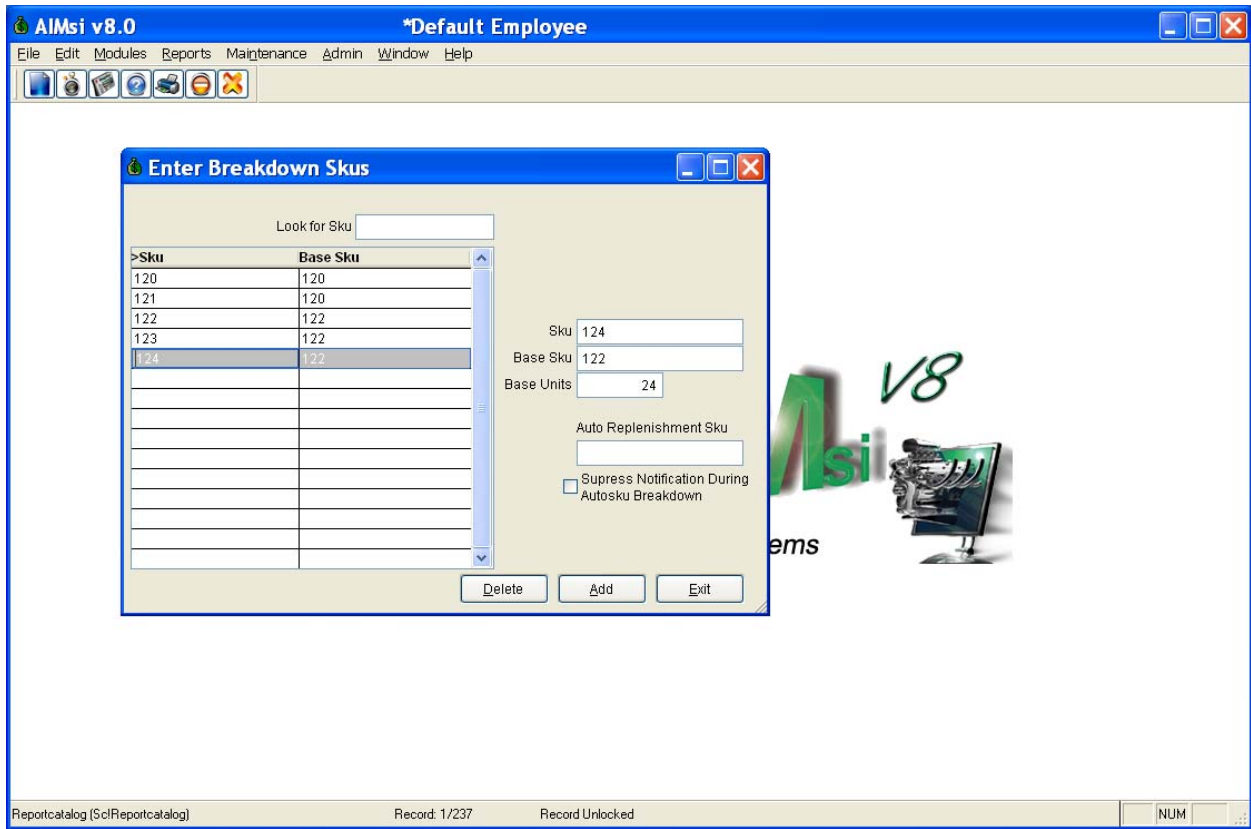
Auto Replenishment Sku

Supress Notification During Autosku Breakdown

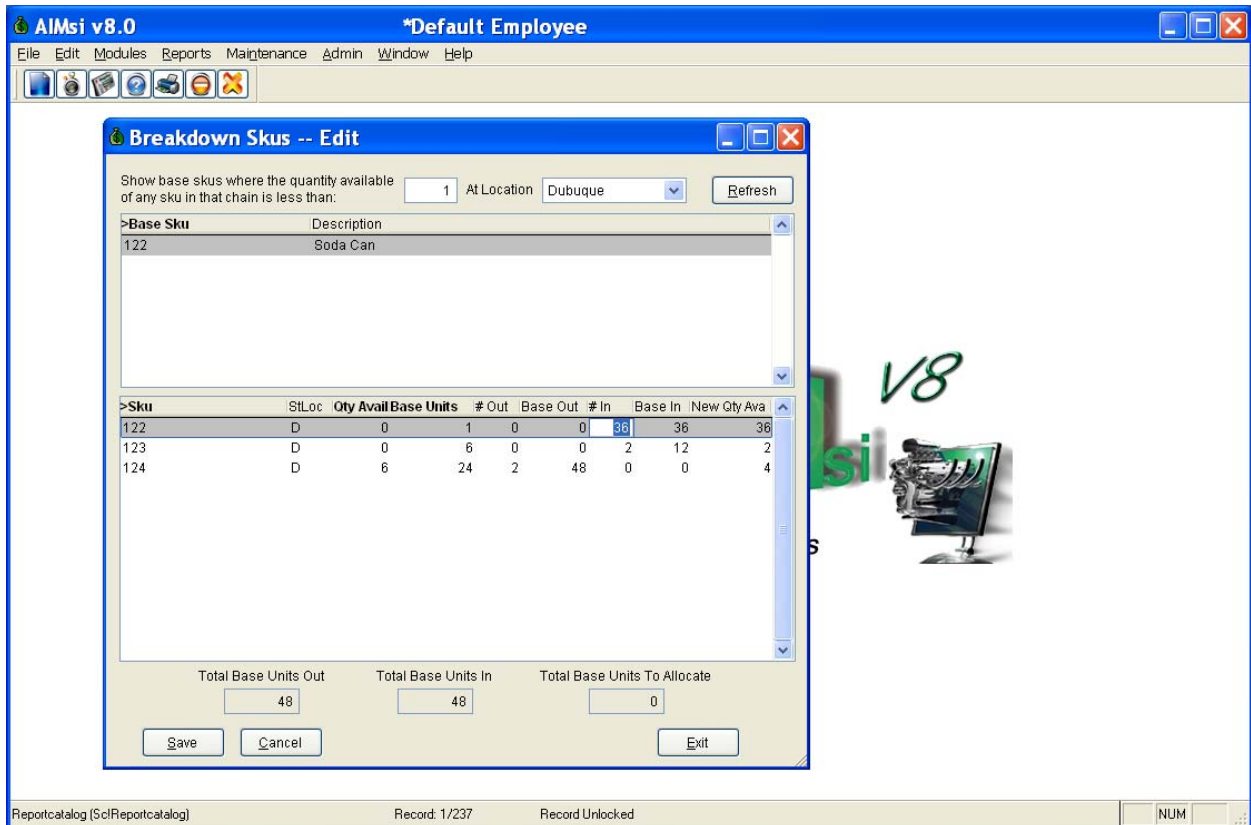
Delete Add Exit

Reportcatalog (SciReportcatalog) Record: 1/237 Record Unlocked NUM

(This is the 24 pack setup. The base SKU is again the soda can.)



(There are currently six 24 packs on-hand, zero cans and zero 6 packs. We are transferring out two 24 packs or 48 cans. 36 cans are going to the single can and 12 cans(two 6 packs) are going to 6 packs.)



(Sample reports: Inventory by Category filtered by Class/Selection Code)

AIMsi v8.0 \*Default Employee

File Edit Modules Reports Maintenance Admin Window Help

Print Preview

Inventory By Category

09/30/2009  
Page 1 of 1

ALL Locations

Sku	Loc	Description	Qty	Retail	Our Price	Cost Each	Total Cost
<b>Cat 1 Food</b>							
<b>Cat 1 Sub Cat 1 Food</b>							
122	D 122	No Mfg Soda Can	36	0.00	0.75	0.11	3.96
123	D 123	No Mfg Soda 6 pack	2	0.00	2.50	0.64	1.28
124	D 124	No Mfg Soda 24 Pack	4	0.00	4.25	2.54	10.16
<b>Total Cat 1 Sub Cat 1 Food</b>			42	0.00	49.00		15.40
<b>Total Cat 1 Food</b>			42	0.00	49.00		15.40
<b>Grand Total</b>			42	0.00	49.00		15.40

Total Records 3

\*\*END REPORT

\*Notes - Serial sku cost may not foot across. Cost is from the sku record. Cost column reflects regular cost.  
Total cost is the cost of all serial numbers. An asterisk in front of a sku denotes a discontinued sku.

Csku Record EOF/3 Exclusive NUM

(Sample Reports: Top Selling Inventory filtered by Class/Selection Code)

AIMsi v8.0 \*Default Employee

File Edit Modules Reports Maintenance Admin Window Help

Print Preview

Top Selling Inventory

09/30/2009 - 09/30/2009  
All Locations

09/30/2009  
Pg# 1

Sku	Desc	Qty	Cost	Sold	Margin	%
122	Soda Can	19	2.47	14.25	11.78	82.67
124	Soda 24 Pack	17	51.00	72.25	21.25	29.41
123	Soda 6 pack	5	0.30	12.50	12.20	97.60
<b>Grand Total</b>		41	53.77	99.00	45.23	45.69

Total Records 3

\*\*END REPORT

Cinvtop Record EOF/3 Exclusive NUM