

Point of Sale Polling Software and Interface
Modules to Help You Take Control of Your
Business



Make the Connection

Free Online Demo

PC>Poll PC>Poll is polling and programming software that helps businesses of all sizes, from mom-and-pop shops to franchises with hundreds of locations, collect and utilize information from electronic cash registers (ECRs) & point of sale terminals.

PC>Poll polling software does more than just basic data collection. It also helps business owners transform their data into a meaningful informational tool that can be used to help them grow and succeed. Point of sale program data can be brought back to the PC and PC>Poll can be used to make additions and changes quickly and easily. Those changes can then be sent automatically to one or more stores. Report data can be collected, viewed, printed and even exported to other software modules to allow complete control of sales information. PC>Poll can connect to point of sale terminals in the same location as the PC or remote connections can be used to connect one PC to terminals around the world.



PC>Poll works with Casio, SAM4s, Sharp and Toshiba TEC America terminals.

The PC>Poll polling software connects to point of sale terminal to collect data. Once back at the PC, there are limitless ways to utilize the data to better manage your business. Below is a brief listing of the various interface options offered by Tri-Tech.

Interfaces

Archive Agent – Archive, delete, restore and transfer previously created polling data files. Archive Agent is a file management tool.

QB Interface – Transfer program and report data to QuickBooks™ to create an interface between point of sale data and the accounting abilities of QuickBooks.

XLS Export Wizard – Transfer collected polling report data to a spreadsheet software application. Design custom spreadsheets and have the software automatically or manually populate the file with previously collected report values.

* AIM, Active-e, and PC>Poll are the intellectual property of Tri-Technical Systems. All other product and company names may be trademarks or registered trademarks of their respective companies.

PC>Poll V7 Polling

Manual programming changes at a point of sale terminal can be time consuming and difficult. It also ties up the terminals from processing sales. PC>Poll V7 streamlines this process; make edits to the software at any time during the business day and distribute edits whenever it is convenient, or automatically schedule events to run at the end of the day. In addition to file editing, PC>Poll V7 can be used to collect critical report data from the terminals. Reports can be polled on demand to spot check information or automatically after business hours. Having the data at the PC gives you complete control to check sales numbers, look for operational errors and to view historical information.

Polling Features

Checkbox style communication selections allows you to quickly multi-select programs to save, to send or report to poll on demand.

Easy to access menus, most recent recall lists and icon buttons to help you intuitively use the software.

Create scripts, schedules and set up the calendar for automatic polling options.

Security and login options to help safeguard data.

Use on a standalone PC or on a network.

Poll terminals locally or remotely, all from one PC. The software supports direct, TCP/IP and FTP connections.

User preferences let you run PC>Poll V7 the way that best fits your business with custom exporting options, screen display and functionality selections, and user-defined classes for quick sorting and searching options.

PC>Poll V7 displays the terminal's program data in both grid and detail formats for easy editing. Checkboxes and pop-up menus make it easy to edit existing items and create new ones.

Mass Update allows you to update and edit many items simultaneously.

Mass Create can rapidly generate hundreds of new items through the use of PLU templates.

PLU Sale options offer the flexibility to design your own product sales. Select the items and sale time periods. Change prices manually or increment/decrement by a set amount or percentage.

Barcode printing to standard label sheets/barcode printers.

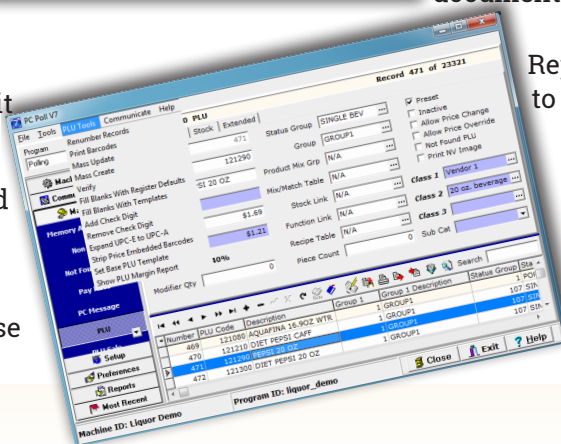
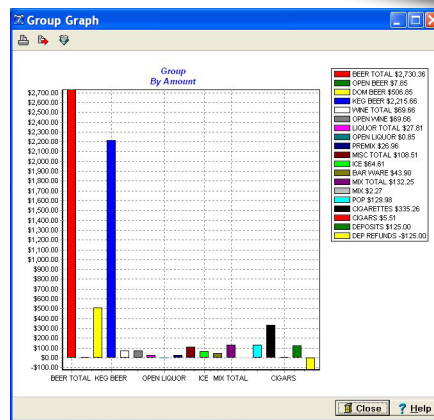
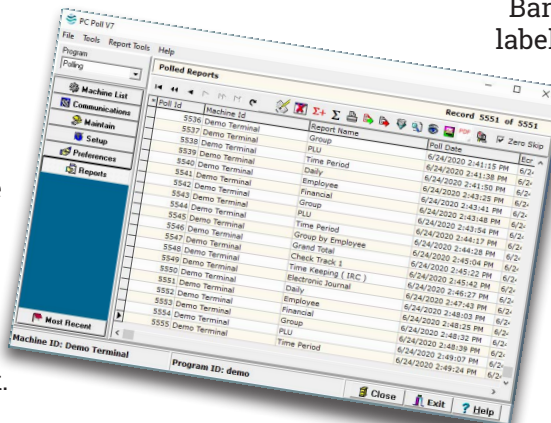
Share data between machines to save time editing identical items.

Set up classes (user groups) for quick filtering, searching, sorting, updating and even reporting.

Program report data to automatically export or email in a variety of formats.

PC>Poll V7 stores report data until you choose to delete it. You can quickly view, print and export previously collected report data. PC>Poll V7 also includes a graphing function. These can be viewed, printed and saved as a .bmp file to allow you to insert the charts into a document or email.

Report consolidation allows you to generate your own week-end, month-end and year-end reports. View, print, and export report totals to .txt, .pdf, .csv or .xls for later viewing.



SUPPORTED POINT OF SALE TERMINALS

SAM4S

- SPS-500
- SPS-300 Series
- ER-900 Series
- SPS-2000
- SPS-1000
- ER-390M
- ER-285M
- SER-7000/7040
- ER-52xxM Series
- ER-650 and ER-650R
- ER-655II
- Sam4POS



SHARP

- UP-810F, UP-820N and UP-820F
- UP-3500
- UP-600 and UP-700
- ER-A520 and ER-A530
- ER-A420 and ER-A410

TOSHIBA

Leading Innovation >>>

- TEC 1595
- TEC FS1650
- TEC MA1650



CASIO®

- TE-8500F and TE-7000S
- TE-3000S and TE-4500F
- QT-6000, QT-6100 and QT-6600
- TE-2200 and TE-2400

Additional Modules

ARCHIVE AGENT

Archive Agent archives PC>Poll program and report databases, custom selected files, and QuickBooks Interface V3 data for all V7 terminals. It is a complete backup for all PC>Poll V7 products.

The software module allows users to archive, restore, merge and delete files from their polling directories.

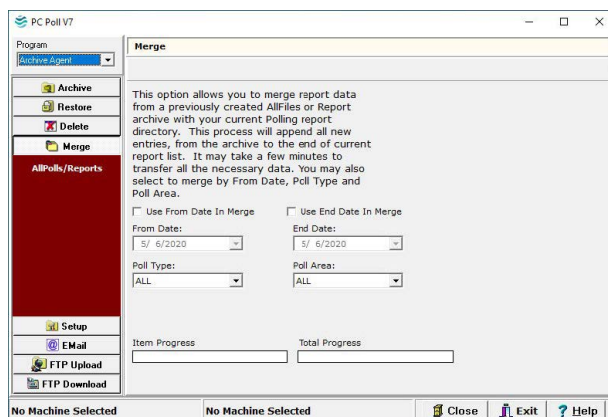
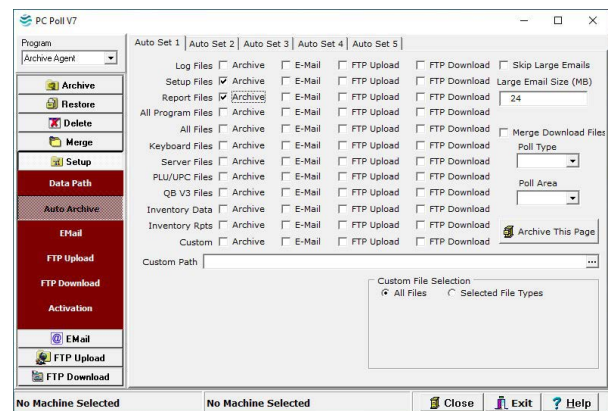
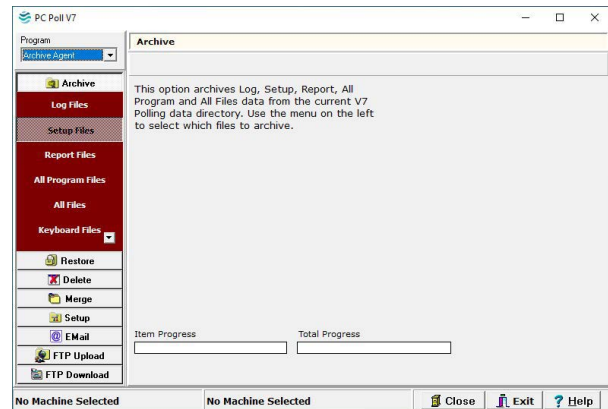
Archive Agent can be used to back up software data and to recover lost data. Data is compressed and stored in Zip files. The file names include both the date the file was created and type of contents, for example: Reports6_24_2020_3_04_01_PM.zip.

The software can also be used to help move data files from one PC to another. Users can make a backup or archive of their polling databases from the old PC, install the software on the new PC, and use Archive Agent to restore the data onto the new PC.

Corporate polling features include emailing/FTP options and data file merge. With this feature local stores can use their individual copy to poll report data each night and then send a copy of those data files to headquarters. Thus allowing both a local store to view their reports as well as corporate.

Archive Agent can be programmed to run automatically via the PC>Poll V7 Calendar.

**Tri-Tech strongly recommends that stores create regular backups of their critical data files either with Archive Agent or a third party application.*



Additional Modules

QUICKBOOKS INTERFACE

Transfers program and report data into QuickBooks from all supported PC>Poll V7 terminals with a few simple clicks.

All files are transferred in and out of QuickBooks using export and import options for the IIF format.

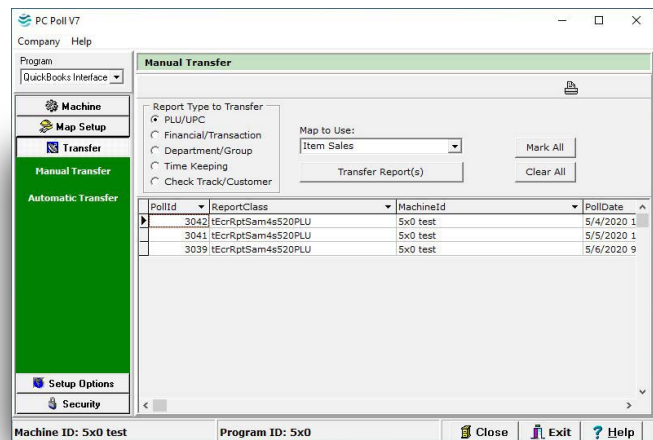
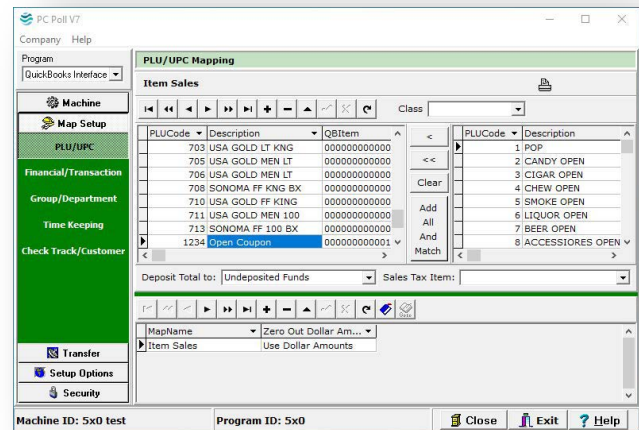
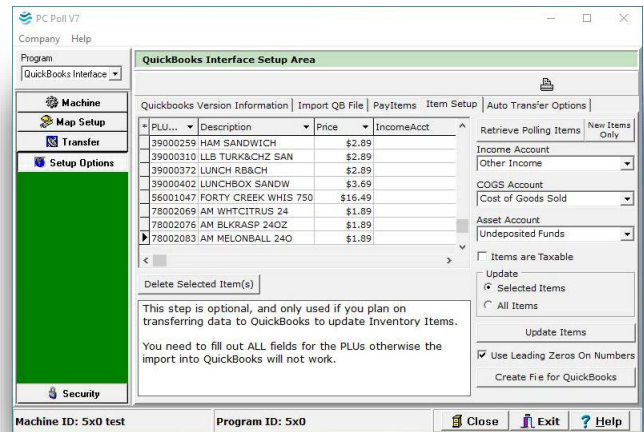
Use the polling software to help create an item list within QuickBooks. The terminal's current PLU file can be formatted and imported into QuickBooks to save setup time.

Tri-Tech's auto transfer routine works for most configurations to allow users to create one import file containing data from multiple report files. Transfer files can be created daily, weekly or on demand.

Interfaces with QuickBooks 5, 6, 99, 2000–2020 Standard, Pro and Premier versions. *Online versions are not supported.

Use any or all of the following reports from PC>Poll V7 to transfer data into QuickBooks:

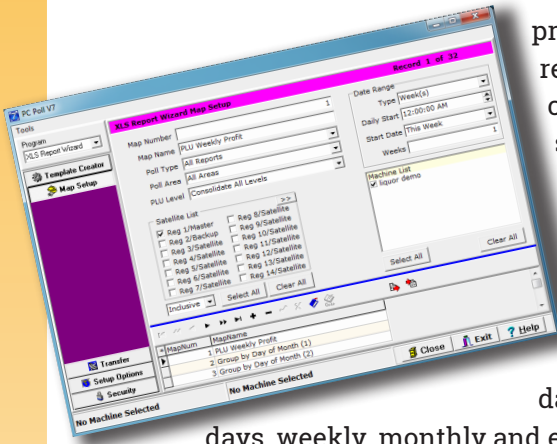
- PLU/UPC/Scan PLU
- Time Keeping
- Open Check/Customer/Check Track
- Department/Group
- Transaction/Financial



XLS Wizard

Collecting data from your point of sale terminals is just the beginning. Being able to sort, view and create custom reports that display the data that is important to YOUR business is needed to excel in today's marketplace. The XLS Wizard allows you to do just that ~ customize previously collected report data to create a single report containing only the data that is important to your business. Combine data from multiple reports onto one spreadsheet for fast and easy access. The XLS Wizard allows you to cut through all the excess information and display what you want to see ~ on demand!

Tri-Tech's XLS Wizard software is an add-on module to the PC>Poll V7 software. The XLS Wizard accesses



previously collected report data to create customized spreadsheet-style reports. Data can be summed over date ranges and broken down by daily shifts, daily shifts, entire days, weekly, monthly and even yearly totals.

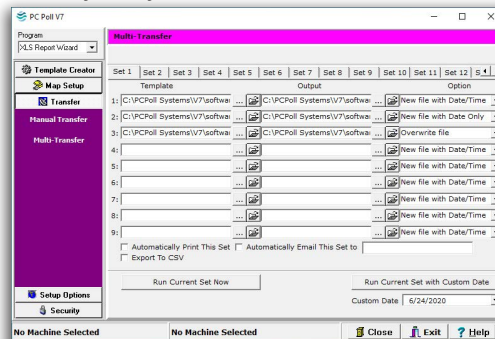
desired effect and readability.

You can create multiple templates with Template Creator and then copy and paste

the automatically generated layouts from multiple spreadsheet files into one spreadsheet to design an end-of-day report as unique as your own business.

Demo Store Sales		Amount	Quantity	Dollar Difference		
This Week	Last Week	Total	This Week	Last Week	Total	
+PLU LVL1 TTL	\$1,600.02	\$962.23	\$2,642.25	336	44	380
+PLU LVL3 TTL	\$26.00	\$75.00	\$101.00	2	5	3
+PLU LVL4 TTL	\$22.00	\$20.00	\$42.00	0	0	0
ADJUST TTL	\$36.00	\$36.00	\$72.00	2	5	3
45 NON-TAX	\$1,764.02	\$1,092.23	\$2,856.25	4	6	8
46 TAX SALES	\$1.50	\$5.66	\$7.16	0	0	0
51 TAX1	\$967.32	\$56.66	\$1,023.98	0	0	0
52 TAX2	\$774.80	\$80.64	\$1,047.96	0	0	0
64 TAKE OUT SALES	\$62.90	\$309.92	\$1,084.72	0	44	388
69 %4	\$69.75	\$5.24	\$68.14	0	0	0
75 NET SALES	\$15.02	\$25.33	\$97.65	0	0	0
77 CREDIT TAX1	(\$1.04)	\$16.23	\$45.73	0	0	0
84 MISC RETURN	\$1,886.93	\$0.00	\$31.25	0	0	0
86 PREVIOUS VOID	(\$0.46)	\$423.70	(\$1.84)	0.02	0	0
88 CANCEL	(\$10.20)	\$0.00	\$2,310.63	0.02	0	0
89 GROSS SALES	(\$29.95)	\$0.00	(\$0.68)	15.42	0	0.02
105 AUDICTION	\$32.90	(\$11.98)	(\$10.20)	0.04	6	21.42
106 CASH IN DRAWER	\$1,892.55	\$0.00	(\$41.53)	0.04	0	0.04
139 CHECK IN DRAWER	(\$5.44)	\$423.70	\$2,316.25	0.04	2	7
143 WASTE	\$1,486.37	\$0.00	(\$5.44)	0	0	0
	\$36.62	\$423.70	\$1,910.07	0.02	0	0.04
	\$1,622.89	\$0.00	\$36.62	15.22	0	0.02
	\$0.00	\$1,946.69	\$0.00	0	6	21.22
	\$0.00	\$0.00	\$0.00	0	0	0
	\$0.00	\$118.34	\$0.16	0	0	0.1
	\$0.00	\$0.00	\$0.16	0	0	0.16
	\$118.34	\$423.70	\$1,946.69	\$1,099.29	\$36.62	\$1,135.91
				\$118.34		

Totals can also consist of grand totals from multiple machines/store locations or be broken down on a per machine basis. The XLS Wizard supports sending data to one spreadsheet file, multiple tabs within one spreadsheet file or it can be configured to populate multiple spreadsheet files automatically.



Available Reports

- PLU (item sales)
- Financial/Transaction
- Hourly
- Group/Department
- Open Check

There are three methods available to allow for easy transferring of data from PC>Poll V7 to the customized spreadsheet files.

1. Conduct a manual transfer on demand.
2. Use a multi-transfer routine that can accommodate up to 450 different templates and output files.
3. Configure the multi-transfer routine to run autonomously via the PC>Poll V7 Calendar.

So, from start to finish, Tri-Tech's XLS Wizard is a quick & easy way to customize YOUR data!

The XLS Wizard makes use of user-defined spreadsheet templates. You can design the report layout, color, fonts and many other spreadsheet settings. (A spreadsheet application is required to create and view XLS Wizard reports and most spreadsheet applications will work with the XLS Wizard.) A Template Creator is included with XLS Wizard and can be used as a starting point in the creation process. Template Creator allows you to very quickly and easily generate a base template. These templates can be used as the final report or completely customized for

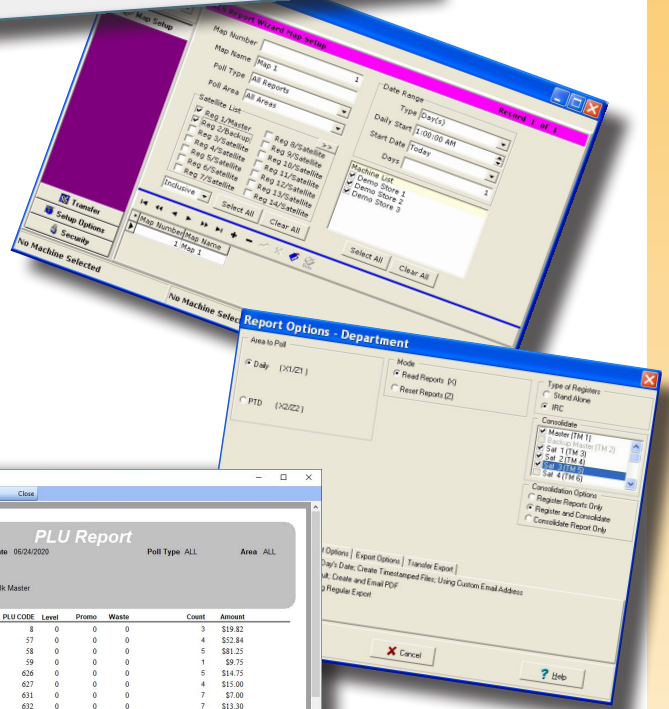


Control of Your Business at Your Fingertips

Innovation and Integration have always been the cornerstones of Tri-Tech's software modules.

PC>Poll V7 is not a cookie-cutter solution. It contains invaluable tools to help you manage your data and take it to the next level. The features within the PC>Poll software make it quick and easy to connect to your point of sale terminals, edit information and collect important report data. Use it to bridge the gap between existing company-specific or legacy programs and the point of sale terminals. Export data into a variety of formats to allow for limitless interfacing and customization options. Let the PC>Poll software help you take control of your data!

Description	Store #1	Amount	Store #2	Total Qty	Total Amt	
+PLU LV12 TTL	212	\$1,492.50	0	302	\$6,165.16	
+PLU LV12 TTL	50	\$479.29	0	302	\$479.29	
ADJST TTL	292	\$2,932.28	90	\$3,672.60	\$5,604.88	
AUDACTION	12	(\$39.36)	3	(10.45)	15	(\$39.81)
AVG. SALES	0	\$202.84	0	\$691.55	0	\$912.39
CASH-IN-DRAWER	52	\$1,894.95	5	\$736.61	4	\$1,283.85
CREDIT TAX1	4	(\$0.03)	3	(\$0.03)	7	(\$0.15)
DRAWER1 TOTAL	0	\$3,312.56	0	\$4,150.07	0	\$7,462.63
GROSS SALES	0	\$3,366.16	0	\$4,150.07	0	\$7,516.23
NON-TAX	28	(\$14.00)	3	(\$1.50)	31	(\$15.50)
NET SALES	60	\$3,312.56	13	\$4,150.07	73	\$7,462.63
PREVIOUS VOID	0	\$0.00	2	(\$94.68)	2	(\$94.68)



Features:

- Automatically print, export or email report data as it is collected. Data can be transferred in .txt, .csv, .xls and .pdf formats.
- Summarize data from one or more stores in a consolidated report or spreadsheet file.
- Automatically export or import program data to allow for editing in software spreadsheet applications.
- Maintenance area exports allow for partial file importing operations.
- Multiple standard export formats to allow for quick and easy interfacing to multiple software applications, or pick and choose which fields on which reports to export!

Description	PLU CODE	Level	Promo	Waste	Count	Amount
ST PAUL ALMANAC	8	0	0	0	3	\$19.82
LOAFER CLUB	57	0	0	0	4	\$22.84
SHORT SLEEVE TSHIRT	58	0	0	0	5	\$81.25
CHAPBOOK	59	0	0	0	1	\$9.75
HOT TEA	626	0	0	0	5	\$14.75
CRATEA	627	0	0	0	4	\$12.00
COKE/ DIET COKE	631	0	0	0	7	\$7.00
IZZE JUICE	632	0	0	0	7	\$13.30
BUBBLE/CRUSH/GINGER	633	0	0	0	1	\$1.95
JUICE BOX	635	0	0	0	1	\$1.00
COFFEE FILTERS	1003	0	0	0	4	\$13.36
POUND COFFEE	1004	0	0	0	11	\$14.02
MOBILE CHNOOK 115	1013	0	0	0	8	\$102.56
VIBUPRO	1014	0	0	0	7	\$59.50
CHNOOK BOOK 121	1016	0	0	0	5	\$104.50
25TH ANNIV MUG	1025	0	0	0	4	\$72.00
HONEY DELIGHT	1030	0	0	0	2	\$11.90
Total					79	\$725.50

www.tritechretail.com
800.670.1736

3162 Cedar Crest Ridge · Dubuque, Iowa 52003