


# USB Pole Display Setup

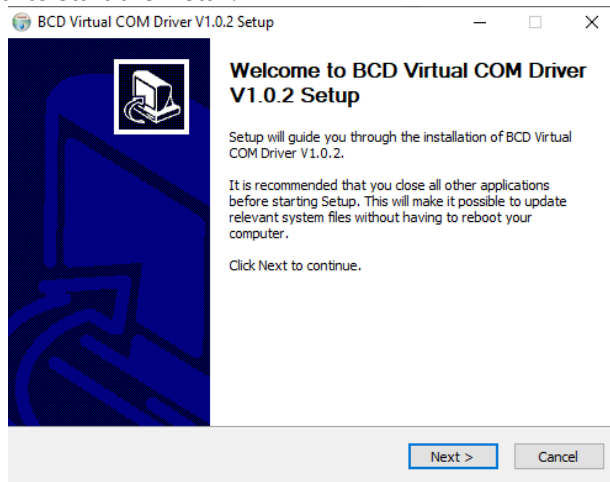
## Bixolon Driver Install

**Note:** If the drivers do not install automatically then they can be downloaded from Bixolon at <http://www.bixolon.com/> > Support > Downloads > Search for BCD-2000 > Virtual Port Driver or from <http://www.technology4retailers.com/t-hardwaresetup.aspx>

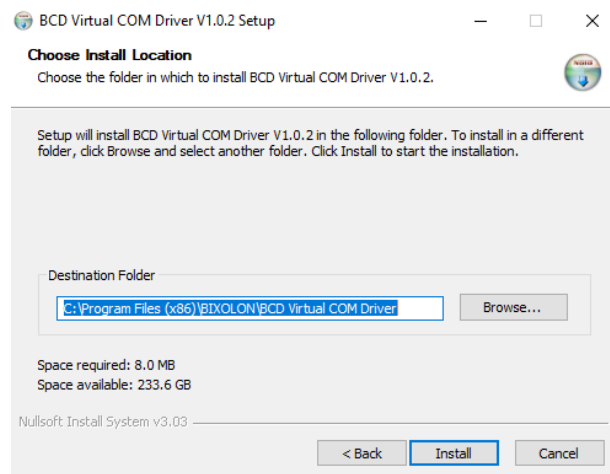
- 1) Open the downloaded zip file BCD\_VCOM. Extract the contents to a folder on your computer.
- 2) Run the vcom driver installer.

 BCD_VCOM4USB_V1.0.2.exe	3/18/2020 11:03 AM	Application	3,917 KB
-----------------------------------------------------------------------------------------------------------	--------------------	-------------	----------

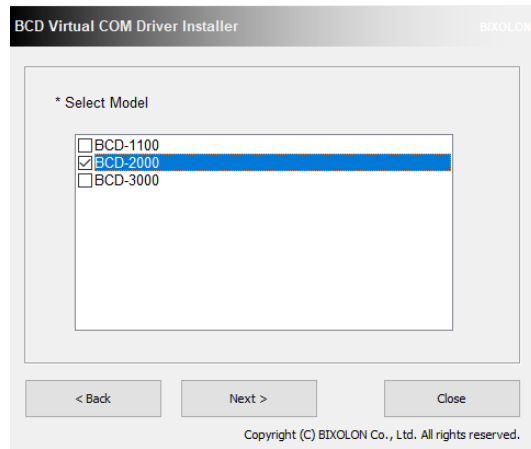
- 3) Click the "Next" to start the install.



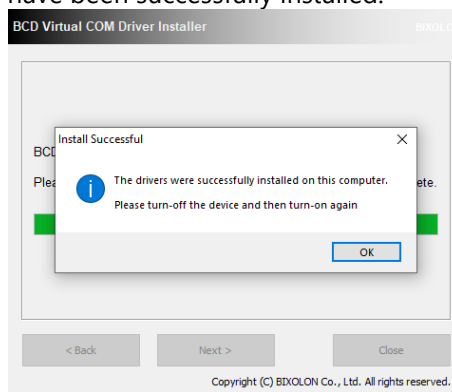
- 4) Click "Install"



- 5) Click "Next" to install the drivers for USB to Serial Pole Display
- 6) Choose the "BCD-2000" pole display driver.




7) Click OK once the drivers have been successfully installed.

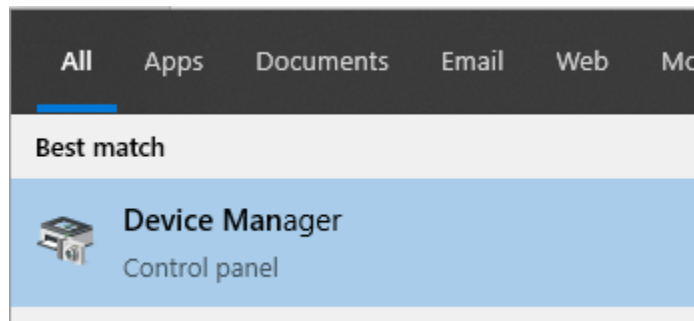


8) Close and Finish the installer.

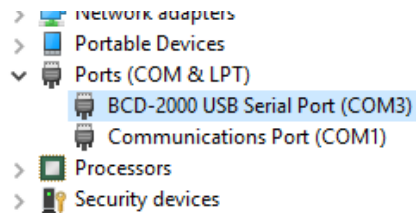
9) Connect the pole display to the computer with the USB cable. Also turn on the pole display with the power button on the bottom of the screen of the display.

10) New hardware wizard should popup to install a USB Serial Port.

11) Once the drivers have finished installing. Click on Start  and type "Device". Select Device Manager.



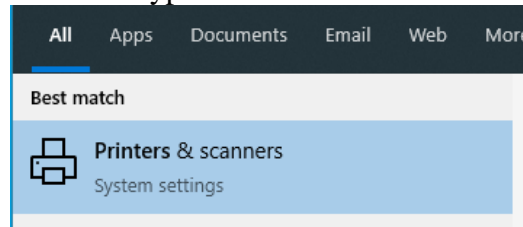
12) Expand the Ports and find the BCD-2000 USB Serial Port



13) Make a note of the number after "COM"

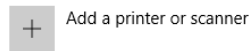
### Install Printer Com Port

1) Click Start  and type "Printers". Select Printers & scanners



2) Click "Add a printer or scanner"  
Printers & scanners

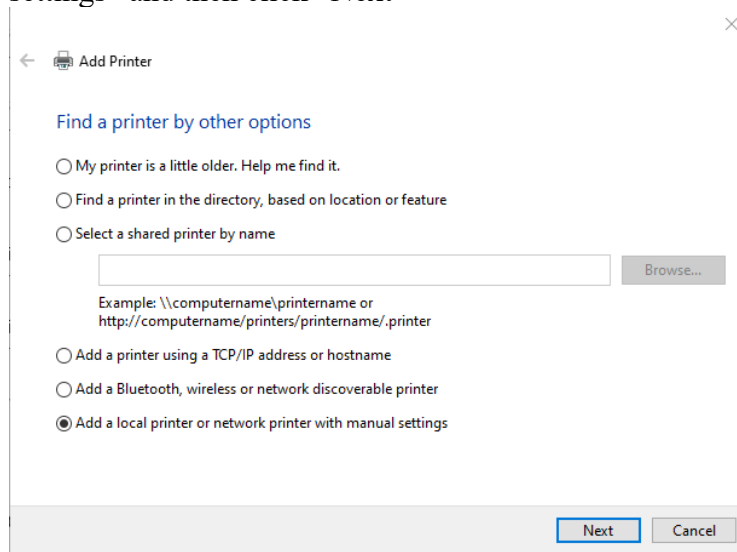
Add printers & scanners



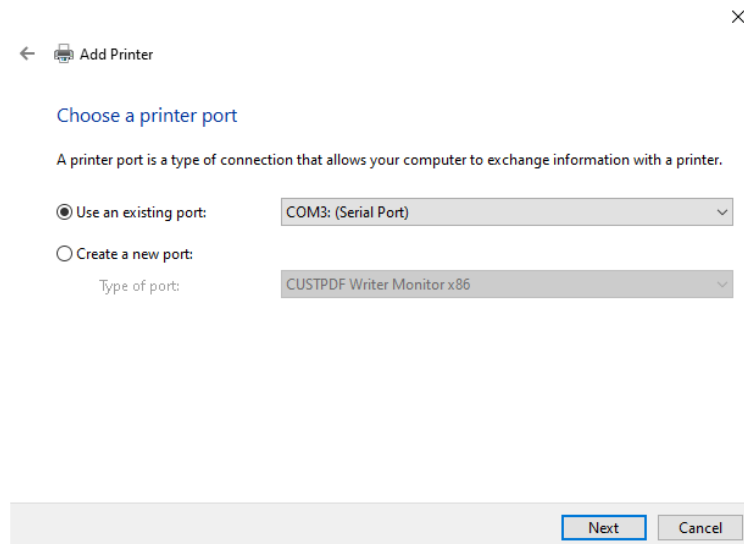
3) Once this is done click "The printer that I wasn't listed"

[The printer that I want isn't listed](#)

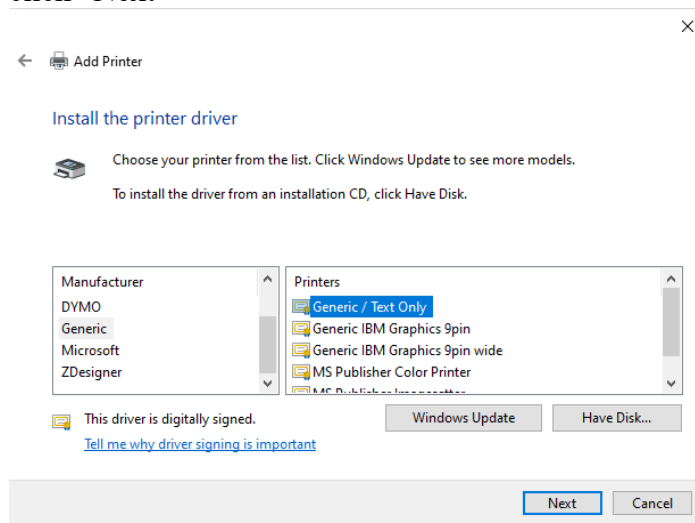
4) On Add Printer choose "Add a local printer or network printer with manual settings" and then click "Next"



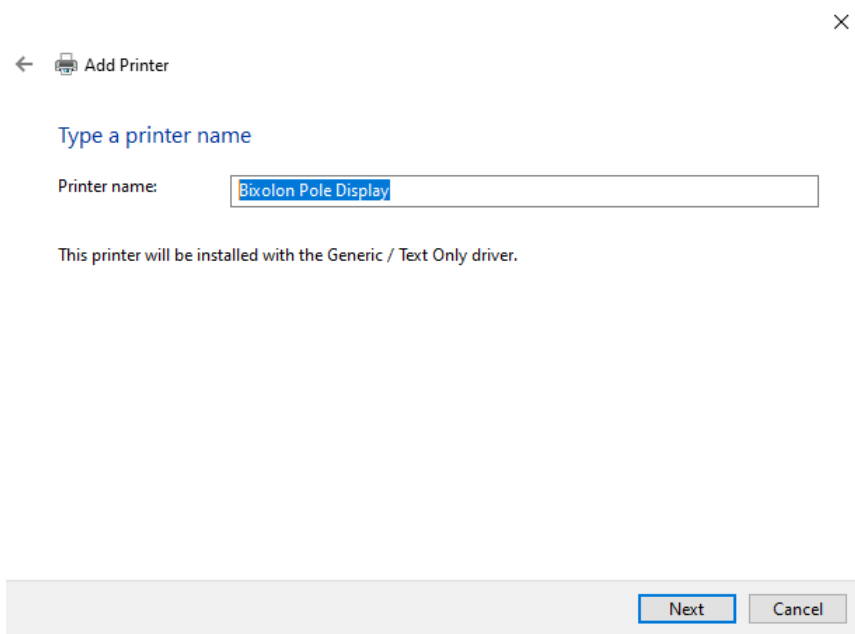
- 5) Find the Com Port for the pole display from Device Manager and then click “Next”



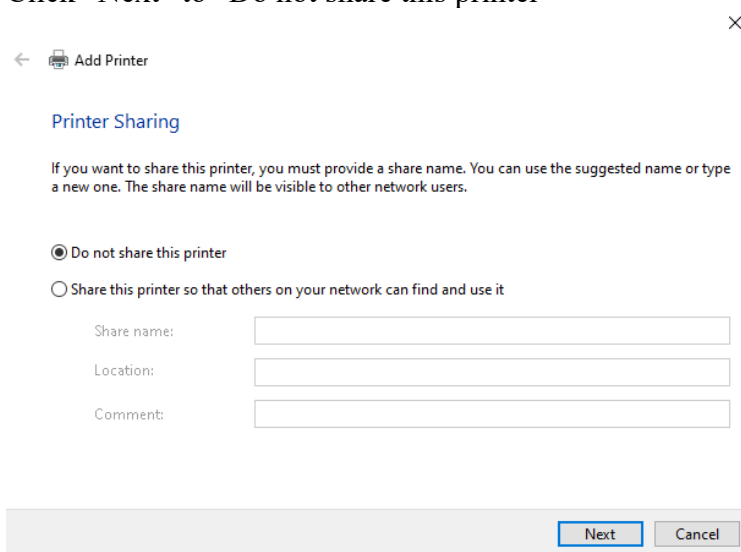
- 6) Select “Generic” and “Generic / Text Only” for the printer to install and then click “Next”



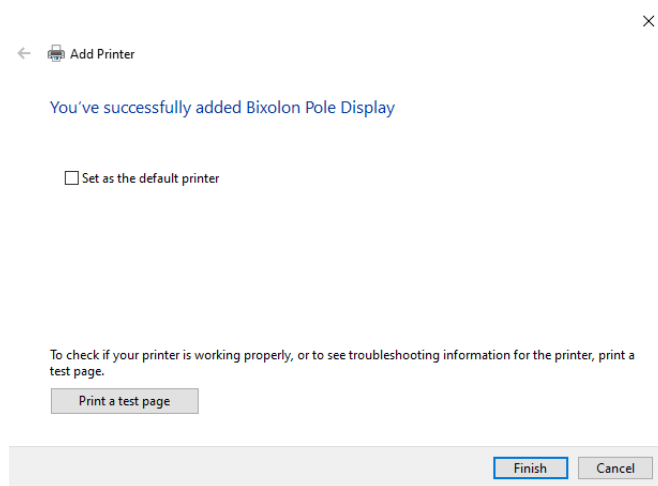
- 7) Give the pole display a printer name and then click “Next”



8) Click “Next” to “Do not share this printer”



9) Click “Finish” to end the installer



## AIM Setup



- 1) Open AIM
- 2) Go to **Maintenance > General > Work Stations > POS > Devices**

**Pole Display Line 1 and/or Line 2:** Enter a message to display to your customers.

**Pole Display Print Driver:** If you installed the pole display using a driver that installed the pole display as a printer. Pole Display Print Driver

**Pole Display Reset Code:** Click the Epson button. This is used for resetting the pole display after each transaction. This can help with pole displays text where it becomes scrambled during the day due to timing.

**Use Sam4s ML Pole Display:** This is normally un-checked. Only needed if you purchased the Sam4s ML Pole Display

## Additional Settings

There are system variables called under **Maintenance > General > System Variables**. That affect the Pole Display.

**PoleDisplayChangeDuelInterval:** This variable controls the amount of time the change due will display on the pole display before it resets. Enter time in seconds. If 0 is entered, change due will be displayed until a new transaction is started. Default is 10

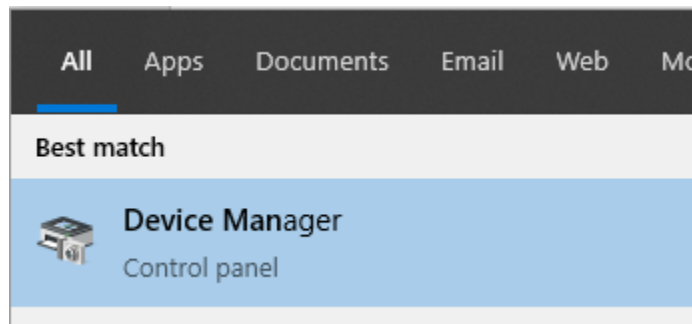
**PoleDisplayTotalInterval:** This variable controls the amount of time an item will display on the pole display before the total is displayed instead. Enter time in seconds. If 0 is entered, the total will not be automatically displayed. Default is 5

### Installing Virtual COM on Dell Computers

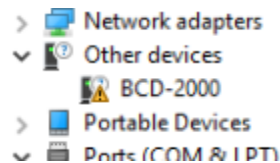
**There is an issue with Dell Computers that have secure boot enabled. The USB Serial driver may not install correctly. If you have this issue follow the steps below.**

- 1) Complete the steps for Bixolon Driver Install first

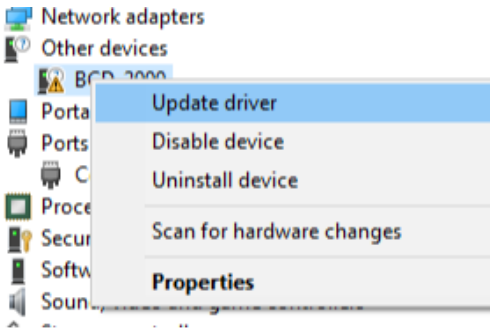
- 2) Click on Start  and type "Device". Select Device Manager



- 3) Expand "Other devices". If you see BCD-2000 then you have an issue with the driver install



- 4) Right click on BCD-2000 and then select "Update driver"



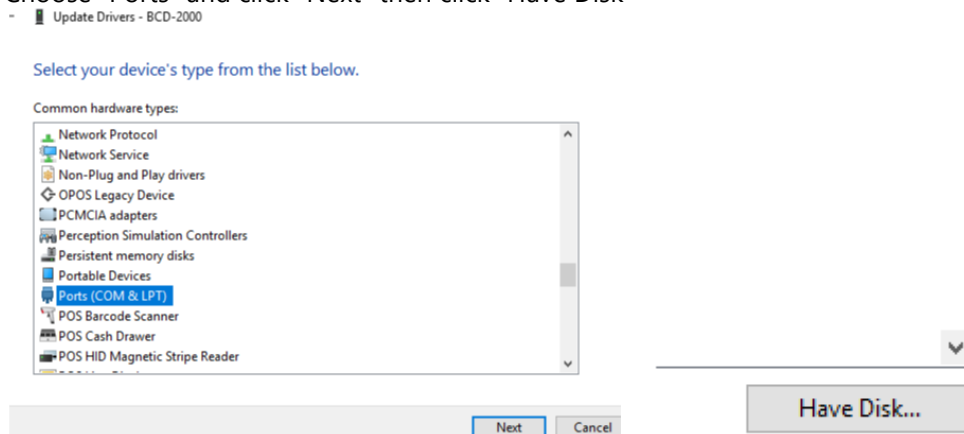
5) Click "Browse my computer for driver software"

→ **Browse my computer for driver software**  
Locate and install driver software manually.

6) Choose "Let me pick from a list of available drivers on my computer"

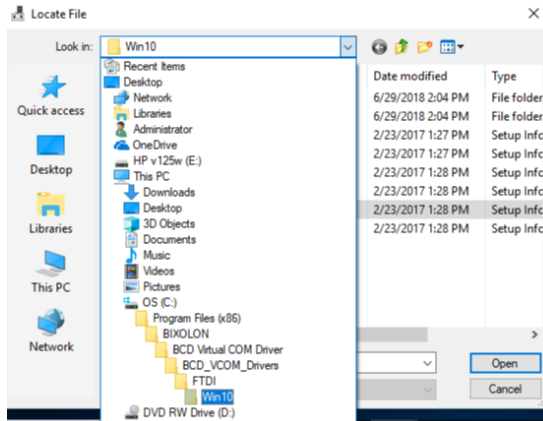
→ **Let me pick from a list of available drivers on my computer**  
This list will show available drivers compatible with the device, and all drivers in the same category as the device.

7) Choose "Ports" and click "Next" then click "Have Disk"

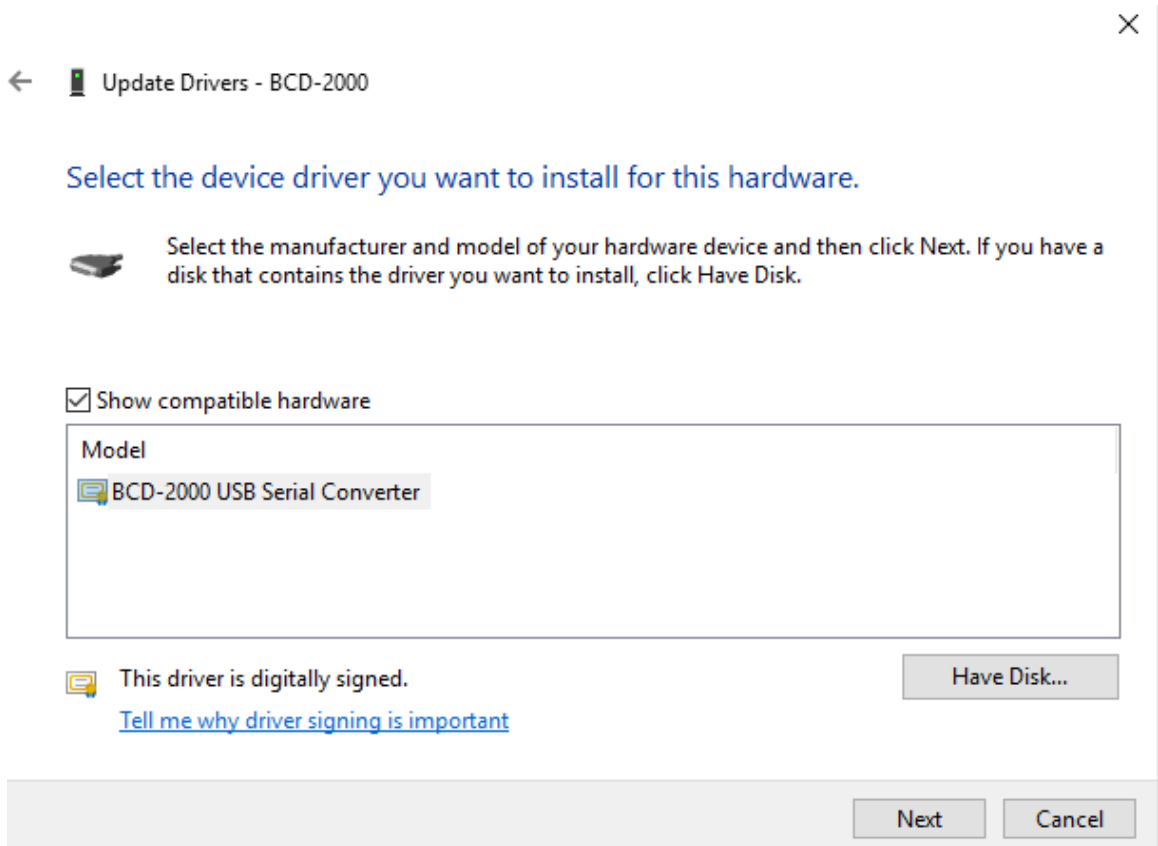


8) Locate the Program Files (x86) > Bixolon > BCD Virtual COM Driver > BCD\_VCOM\_Drivers > FTDI > Win 10 folder on the computer and select the ftdibus\_bcd2000.inf file

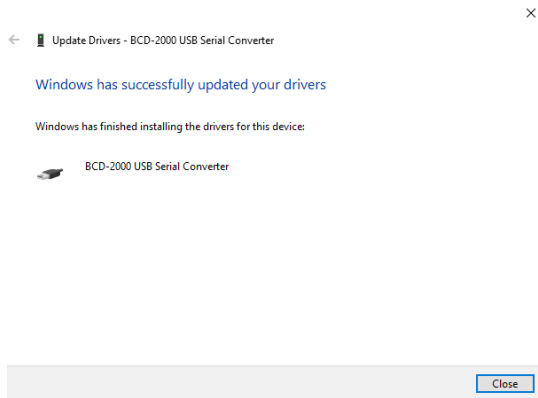




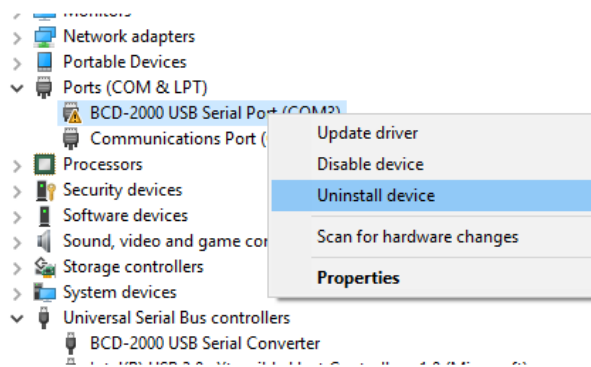
9) Select the “BCD-2000 USB Serial Converter” and then click “Next”



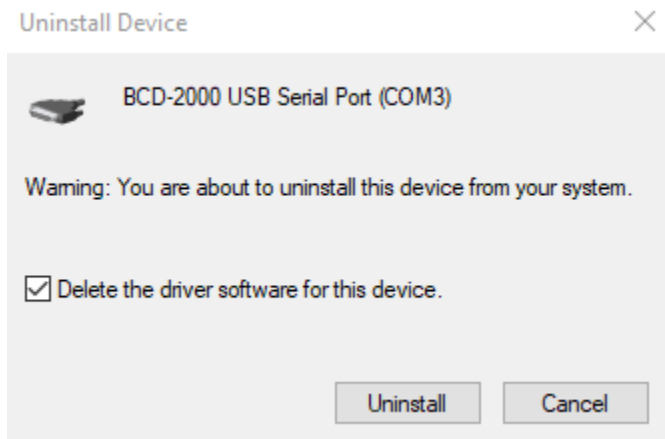
10) The install should say it was successfully updated



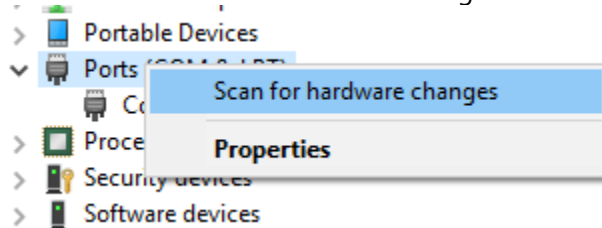
11) Open the Ports and right click on "BCD-2000 USB Serial Port" and then click "uninstall device"



12) Select "Delete the driver software for this device" and then "Uninstall"

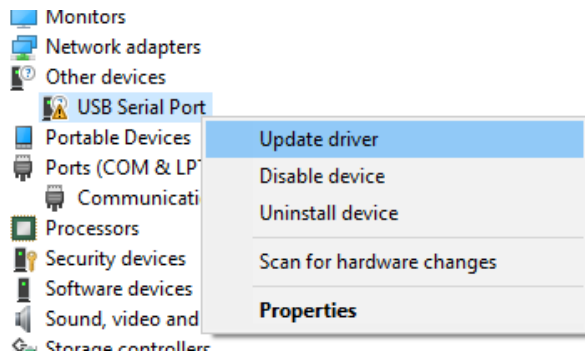


13) Right click on Ports and Scan for hardware changes



14) Expand "Other devices". If you see USB Serial Port then do the following

15) Click "USB Serial Port" and then choose "Update driver"



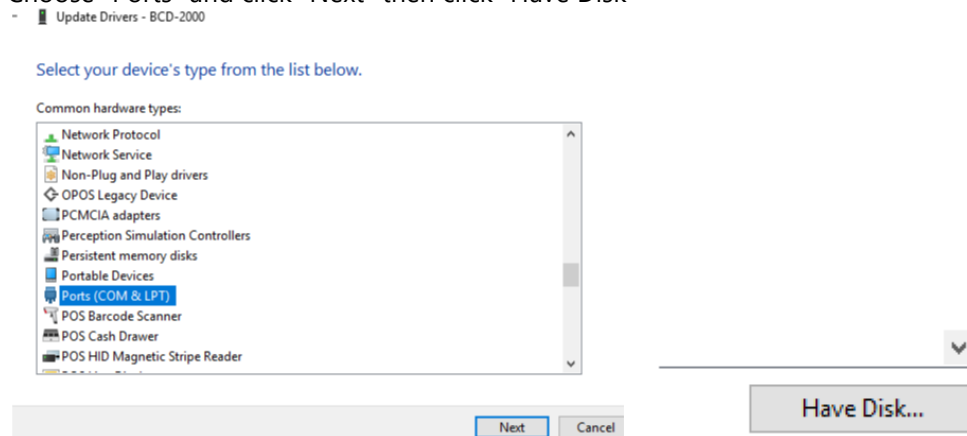
16) Click "Browse my computer for driver software"

→ **Browse my computer for driver software**  
Locate and install driver software manually.

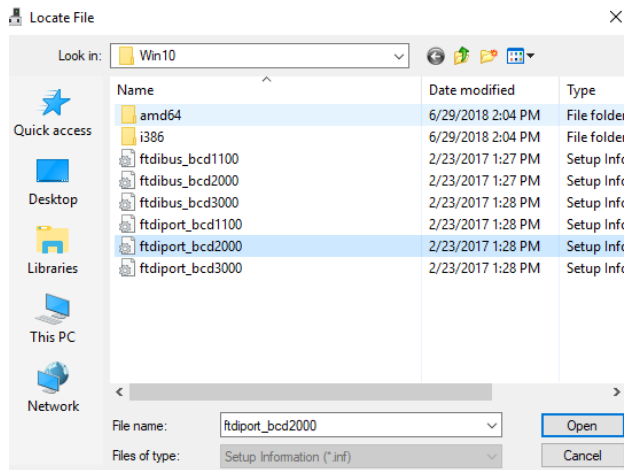
17) Choose "let me pick from a list of available drivers on my computer"

→ **Let me pick from a list of available drivers on my computer**  
This list will show available drivers compatible with the device, and all drivers in the same category as the device.

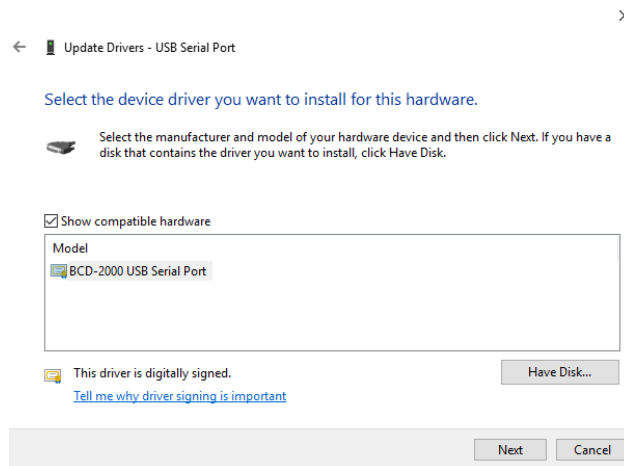
18) Choose "Ports" and click "Next" then click "Have Disk"



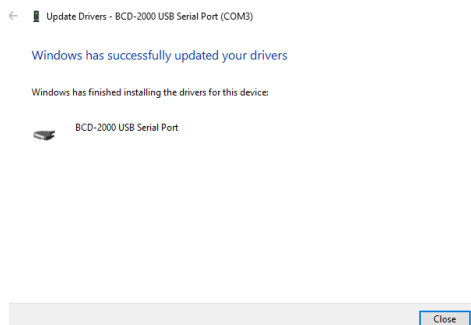
19) Locate the Program Files (x86) > Bixolon > BCD Virtual COM Driver > BCD\_VCOM\_Drivers > FTDI > Win 10 folder on the computer and select the ftdiport\_bcd2000.inf file



20) Select "BCD-2000 USB Serial Port" and click "Next"



21) The install should say it was successfully updated



22) The USB Serial Port should now be installed

