

Touch Driver Install Manual

SPT-4700

(Version 1.0)

www.sam4s.com

Revision A (Aug 17, 2012)



Contents

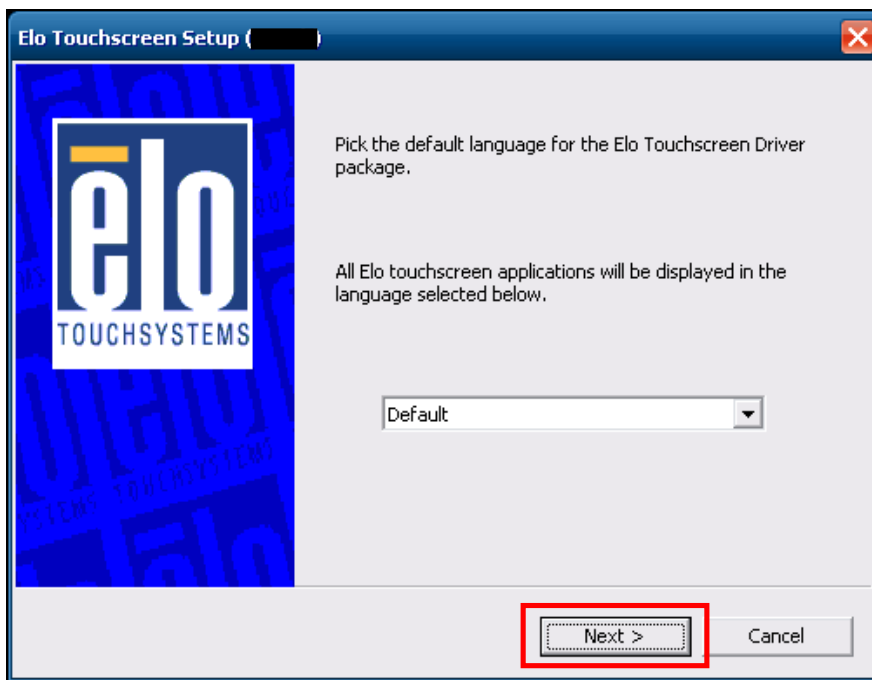
* Touch Driver Install Procedure.....	3
* Calibration of Touch Screen	9
* Select mouse right click function	12

* Touch Driver Install Procedure

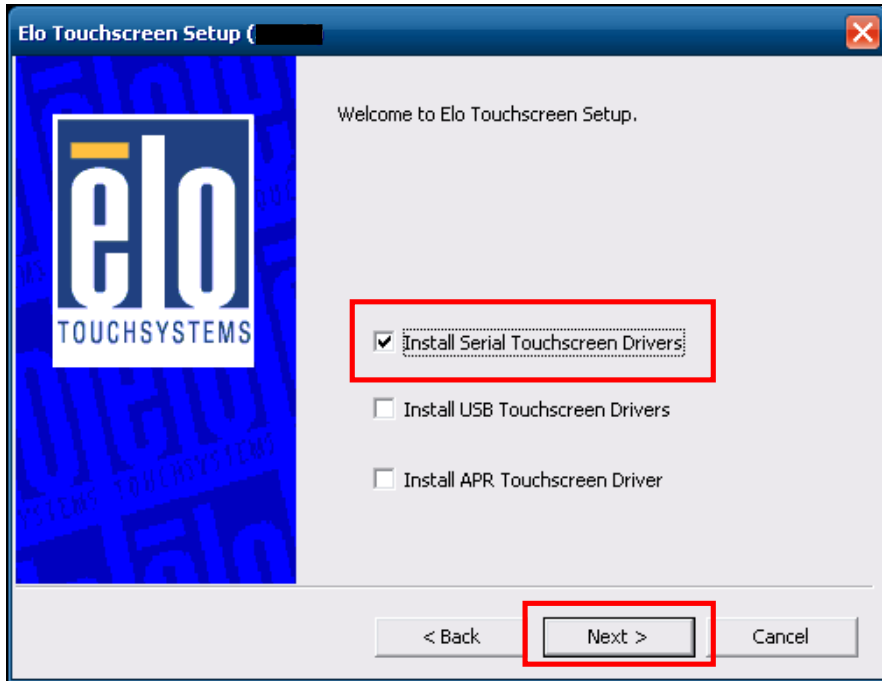
- 1) Run '**SWxxxxxx_TETouch_x.x.x.exe**' file.
(※ The file version of touch driver can change without notice.)



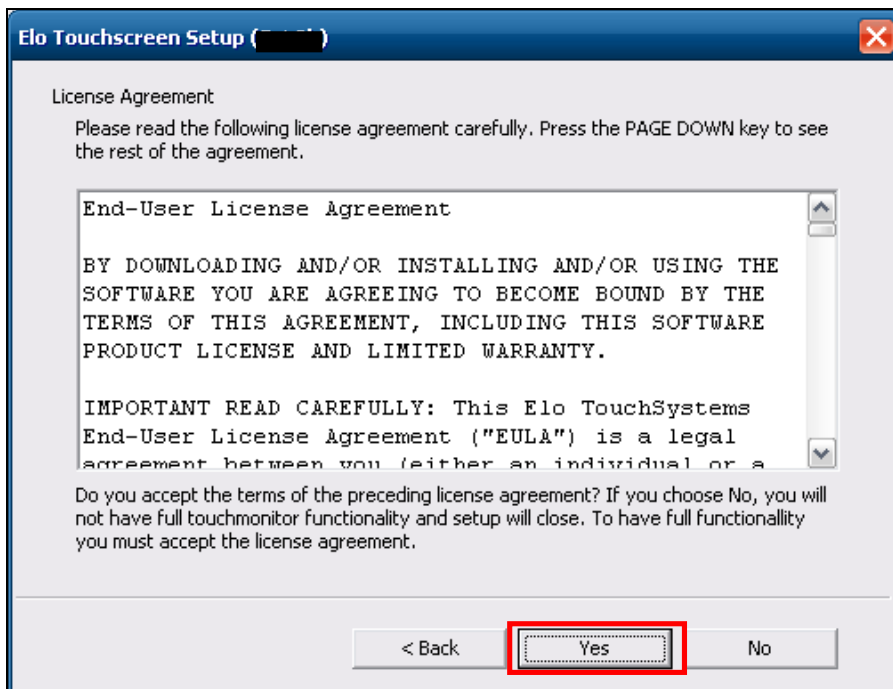
- 2) Click '**Next**' button.



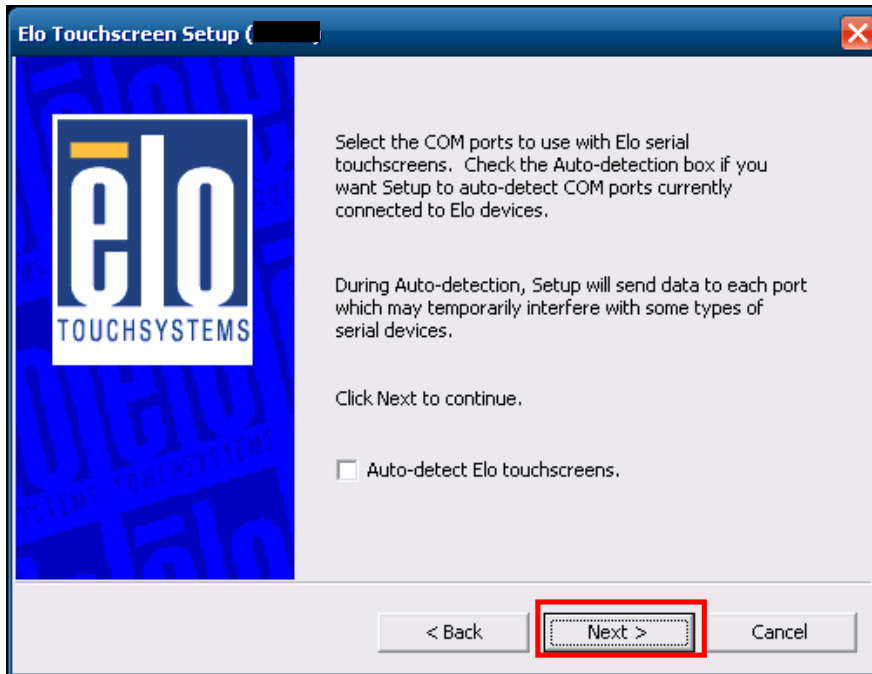
- 3) Check the **'Install Serial Touchscreen Drivers'** box. And click **'Next'** button.



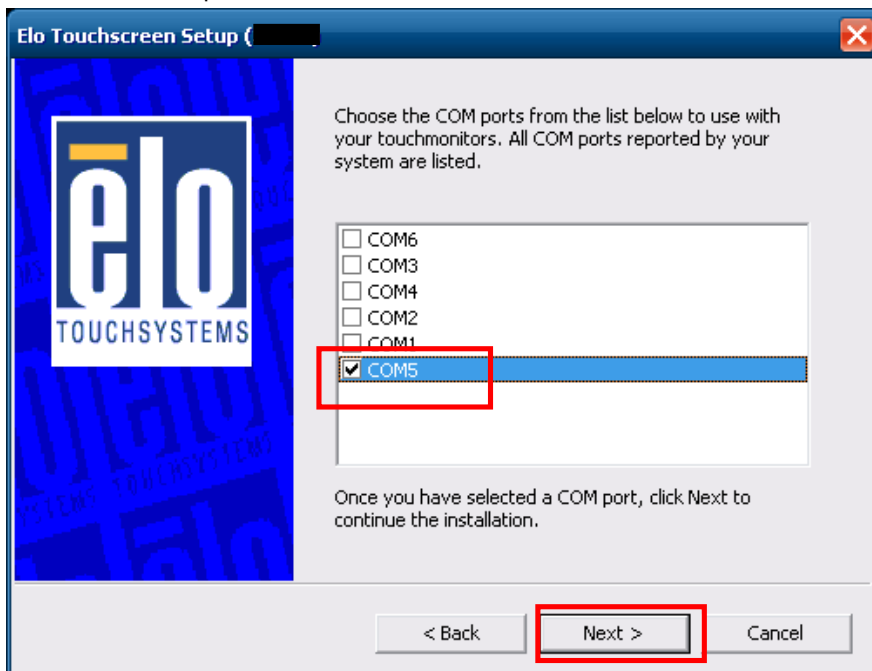
- 4) Agree with license agreement. Click **'Yes'** button.



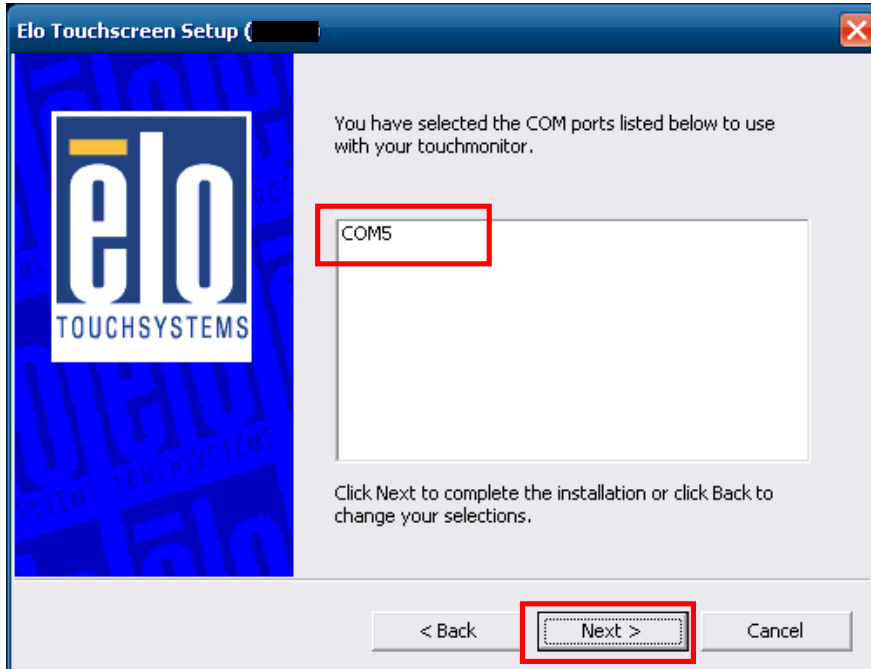
5) Click 'Next' button.



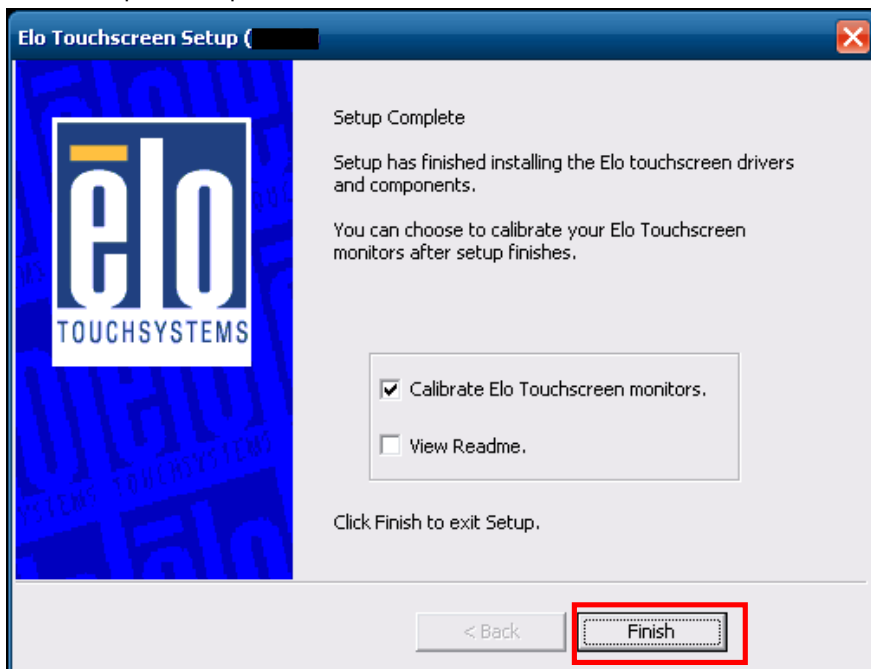
6) Check the serial port 'COM5' for touch screen. Click 'Next' button.



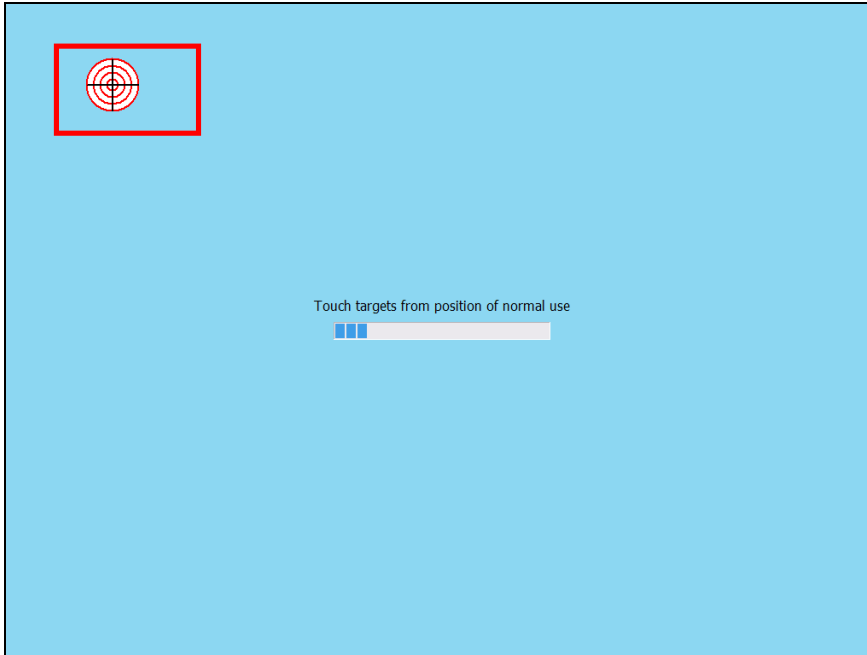
- 7) Confirm the serial port is 'COM5'. And click 'Next' button.



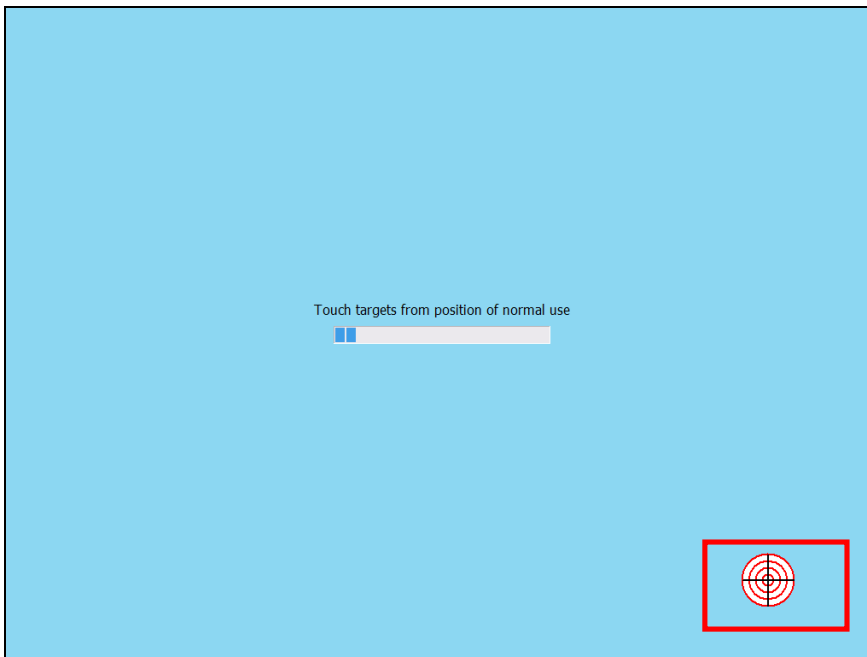
- 8) If the setup is completed, click 'Finish' button.



9) Calibration procedure will be started. Press the center of red circle more than 2 seconds.



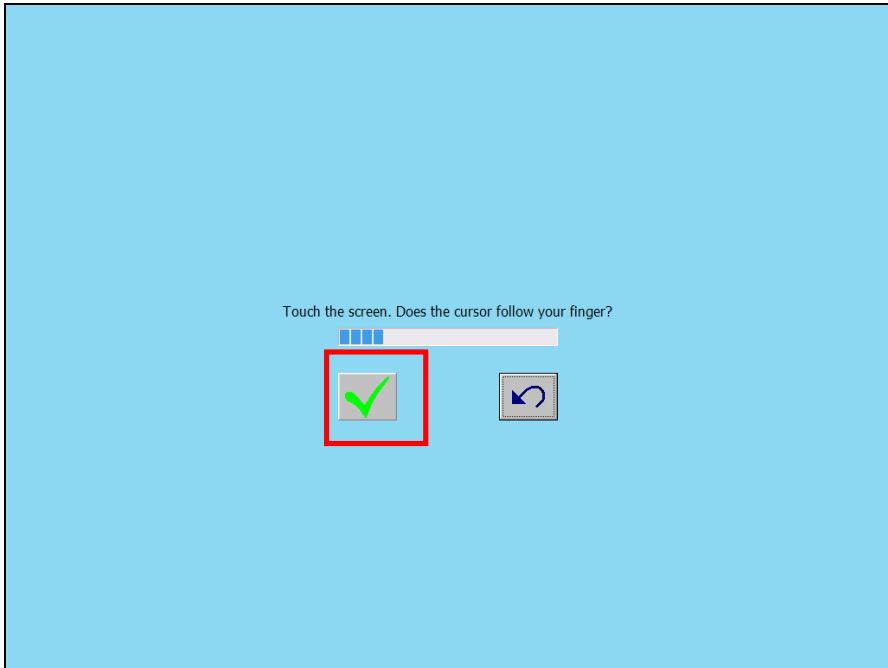
10) When the red circle appears in other area, press the center of red circle more than 2 seconds.



11) When the red circle appears in other area, press the center of red circle more than 2 seconds.

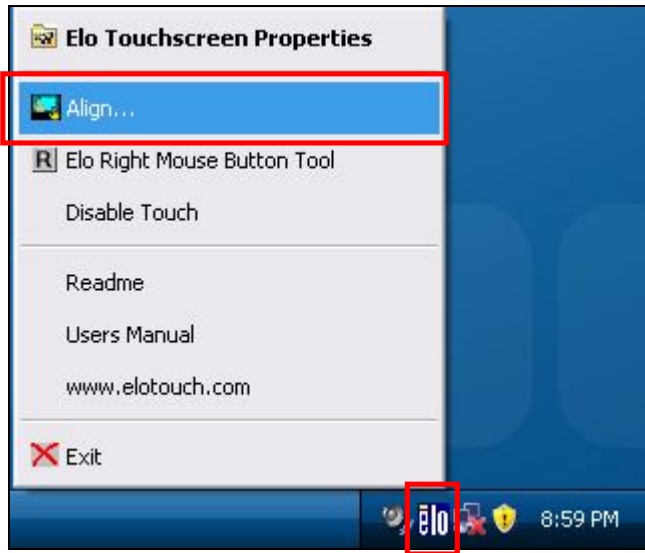


12) Click the green box to finish the calibration procedure.

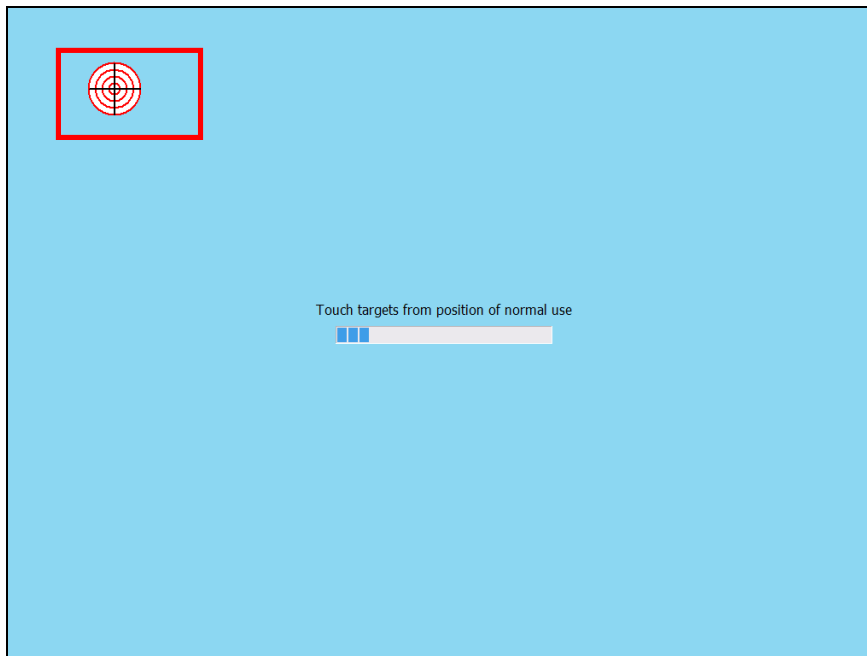


* Calibration of Touch Screen

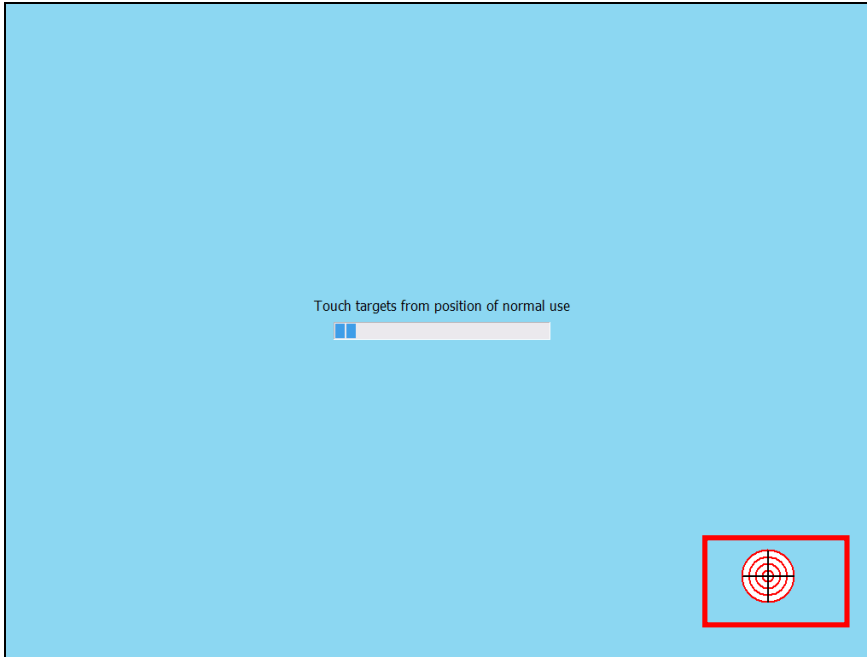
- 1) Click the 'elo icon' on tray area in Windows. And select 'Align...' menu.



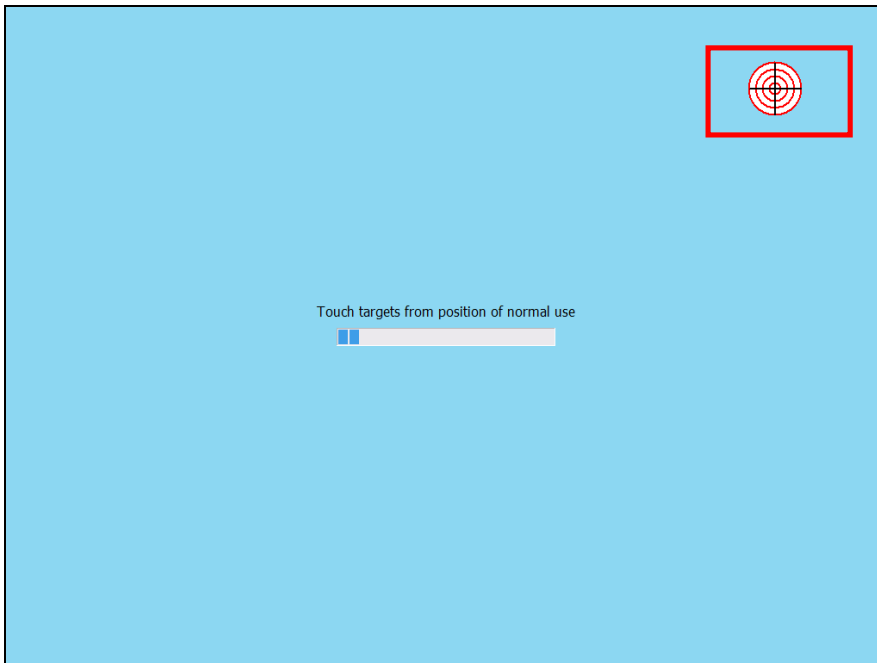
- 2) Calibration procedure will be started. Press the center of red circle more than 2 seconds.



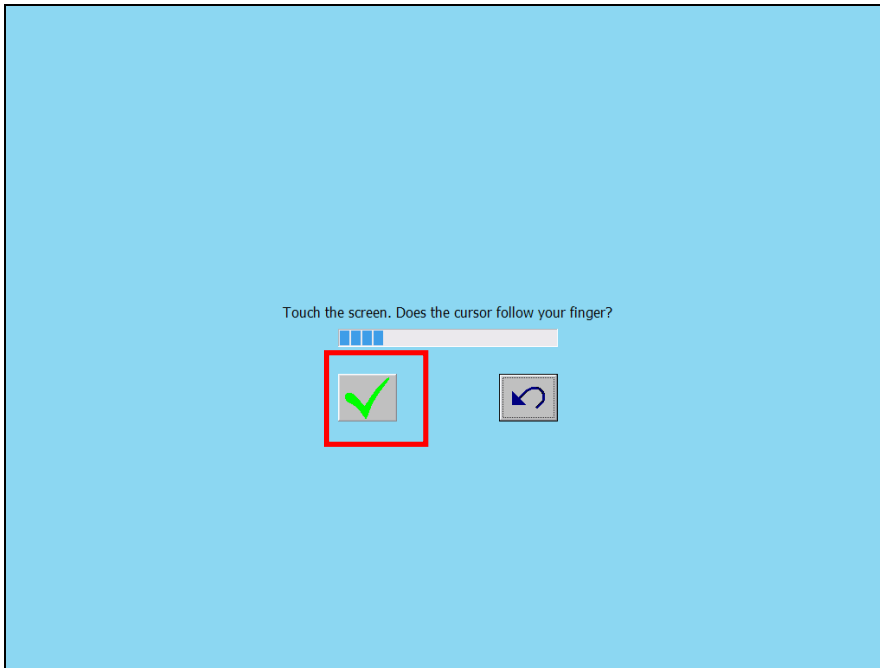
- 3) When the red circle appears in other area, press the center of red circle more than 2 seconds.



- 4) When the red circle appears in other area, press the center of red circle more than 2 seconds.



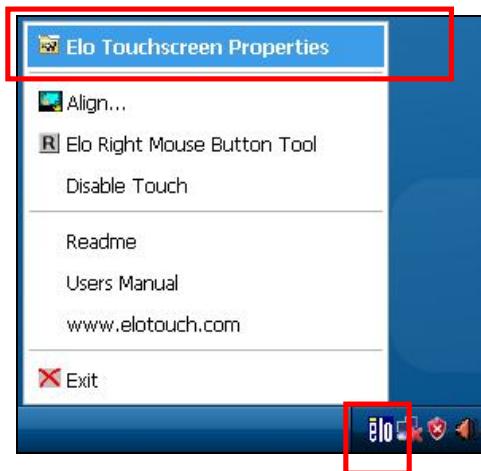
- 5) Click the green box to finish the calibration procedure.



* Using mouse right click function

If you press the same point on desktop more than 2 seconds, the pop-up will be displayed. It is similar function with right-click of mouse. Refer to below steps to select "using mouse right-click function".

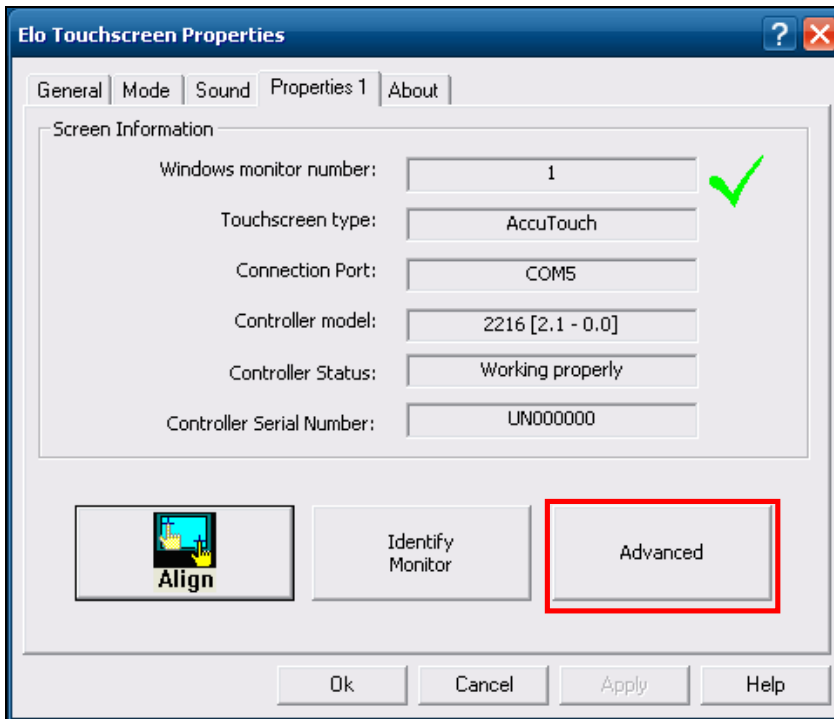
- 1) Click the 'elo icon' on tray area in Windows. And select 'Elo Touchscreen Properties' on the menu.



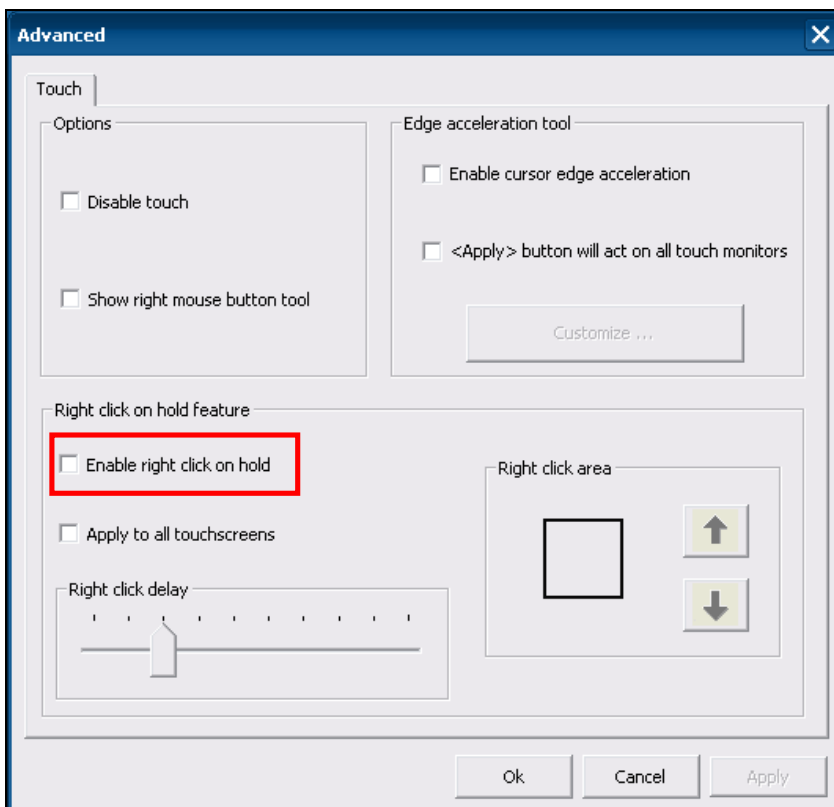
- 2) Select 'Properties 1' tab.



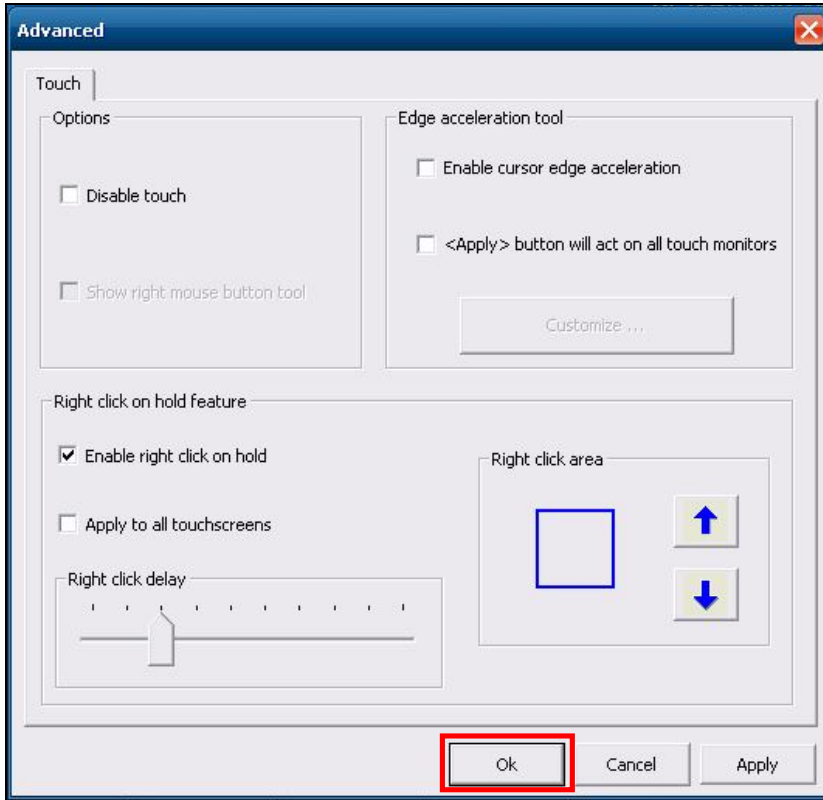
3) Click '**Advanced**' button.



4) Check the '**Enable right click on hold**' box.



5) Save the current change to click 'OK' button.



6) Finish the dialog to click 'OK' button.

